

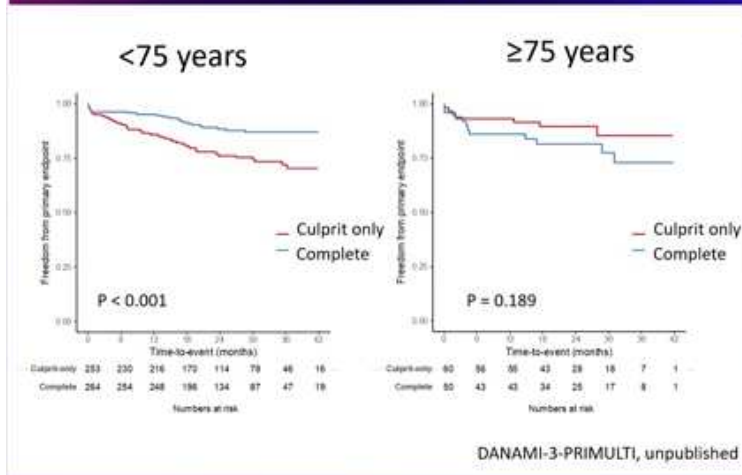
# Newsletter #15

## From the recent #PCReCourse



Thomas Engstrom  
Copenhagen - Denmark

### Complete revascularization



**HOT TOPIC**



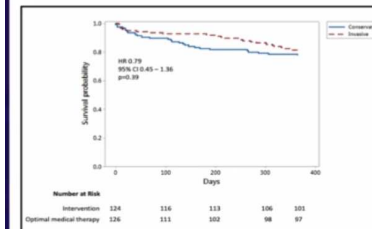
Adam  
de Belder

**HOT TOPIC**

### What are the essential results?

	Intervention (n=124)	OMT (n=126)	HR	95% CI	p-value
Combined primary endpoint	23/124 (18.5%)	28/126 (22.2%)	0.79	0.45 – 1.36	0.39
All-cause mortality	13/124 (10.5%)	14/126 (11.1%)	0.94	0.44 – 1.99	0.86
Non-fatal reinfarction	12/124 (9.7%)	18/126 (14.3%)	0.64	0.31 – 1.32	0.23

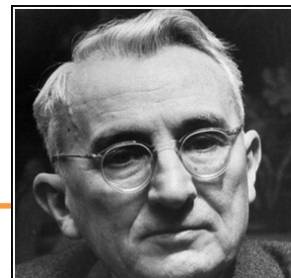
#### Kaplan-Meier plot for primary endpoint



#### Secondary endpoints

	Intervention (n=124)	Optimal medical therapy (n=126)	p-value
Unplanned revascularisation	2/124 (1.6%)	8/126 (6.4%)	0.10
Permanent stroke	3/124 (2.4%)	3/126 (2.4%)	1.00
Major bleeding	7/124 (5.6%)	3/126 (2.4%)	0.21
Canadian Cardiovascular Society angina class at 1 year	No angina 78/100 (78.0%) Class 1 15/100 (15.0%) Class 2 5/100 (5.0%) Class 3 2/100 (2.0%) Class 4 0/100 (0%)	No angina 72/101 (71.3%) Class 1 17/101 (16.8%) Class 2 10/101 (9.9%) Class 3 2/101 (2.0%) Class 4 0/101 (0%)	0.25
Stent thrombosis	0/124 (0%)	0/126 (0%)	1.00
In-hospital major complications	4/124 (3.2%)	2/126 (1.6%)	0.45

Do you believe that the topic “complete revasc in older MI patients” is out of date?



If you are wrong, admit it quickly and emphatically.

— Dale Carnegie —



# Newsletter #15



Special Thanks to Centers and PIs who enrolled at least one patient in June

#Grosseto

#Siracusa

#Reggio Emilia

#Torino Rivoli

#Bologna Maggiore

#Maddaloni

#Rimini

#Ravenna

#Ferrara

#Madrid La Paz

#Lugo

#Santiago

#Vigo

#Valencia La Fe

#Valladolid



@theFIRE\_trial Pis

Stay tuned on the enrolment ....

We need at least 70 pts/month

We need one patient/week/center

