



Functional versus Culprit-only Revascularization in Elderly Patients with Myocardial Infarction and Multivessel Disease: the **FIRE Trial**

STUDY PROCEDURES



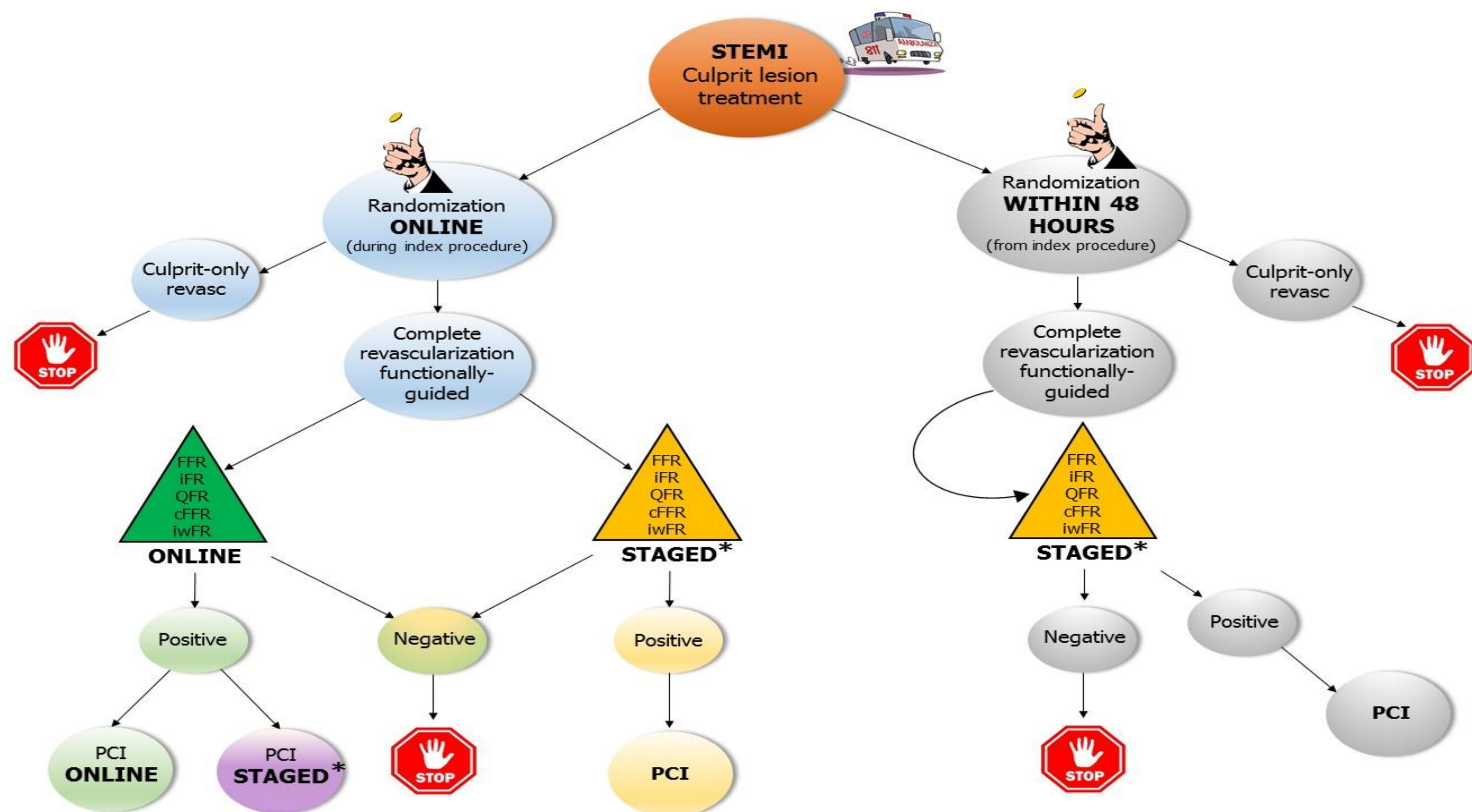
Functional versus Culprit-only Revascularization in Elderly Patients with Myocardial Infarction and Multivessel Disease

Study Contact Information:

Simone Biscaglia

email: bscsmn@unife.it phone: +390532236450

ST SEGMENT ELEVATION MYOCARDIAL INFARCTION



*STAGED: second procedure before discharge

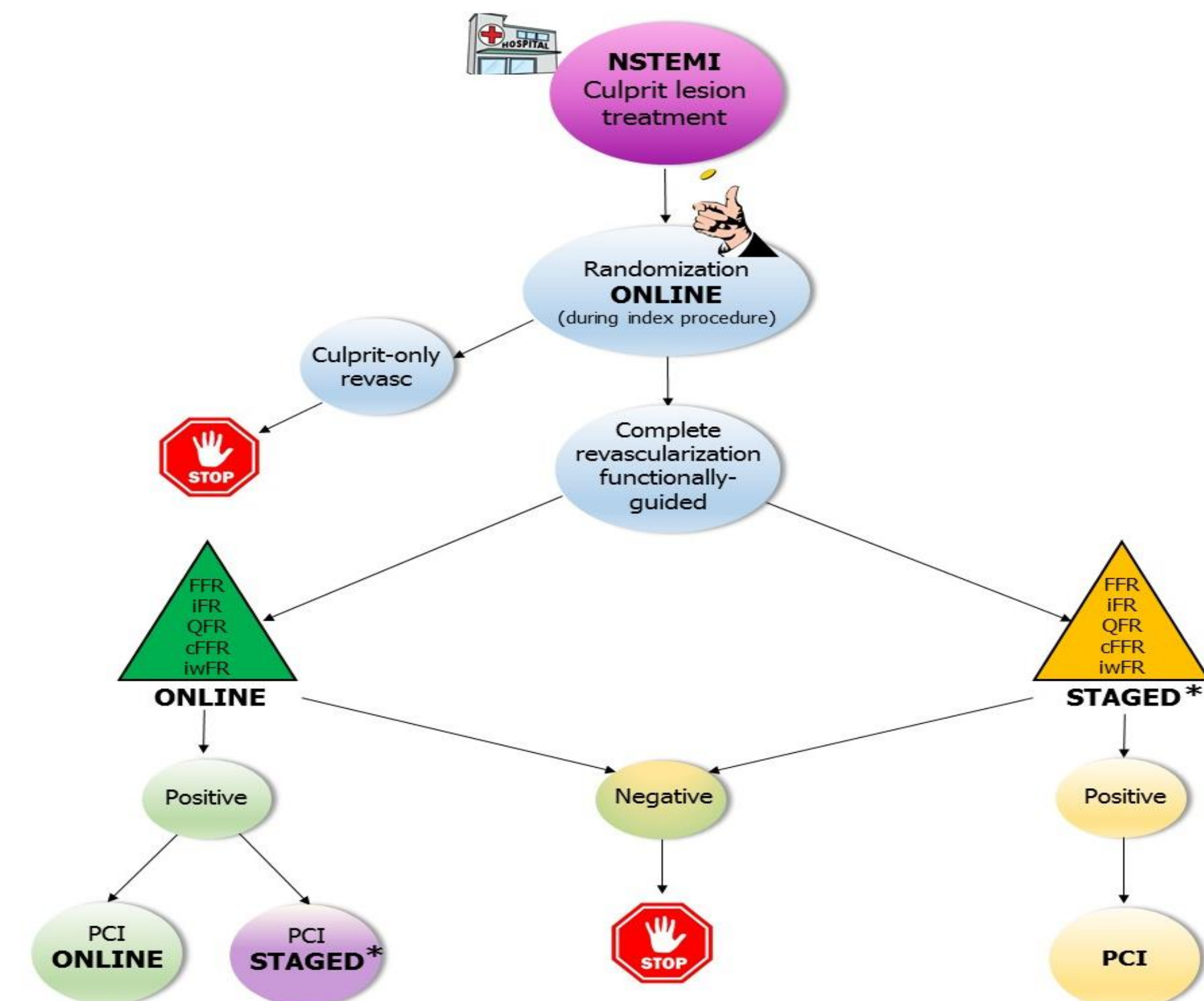
Inclusion criteria

- Patients ≥ 75 years
- MI (STE or NSTEMI) with indication to invasive management
- Multi-vessel disease defined as at least 1 non-culprit coronary artery lesion at least 2.5 mm in diameter deemed at visual estimation with a diameter stenosis % ranging from 50 to 99% amenable to successful treatment with PCI
- Successful treatment of culprit lesion

Exclusion criteria

- Planned surgical revascularization OR Left Main lesion as non-culprit
- Non-cardiovascular co-morbidity reducing life expectancy to < 1 year
- Any factor precluding 1-year follow-up
- Prior Coronary Artery Bypass Graft (CABG) Surgery
- Impossibility to identify a clear culprit lesion

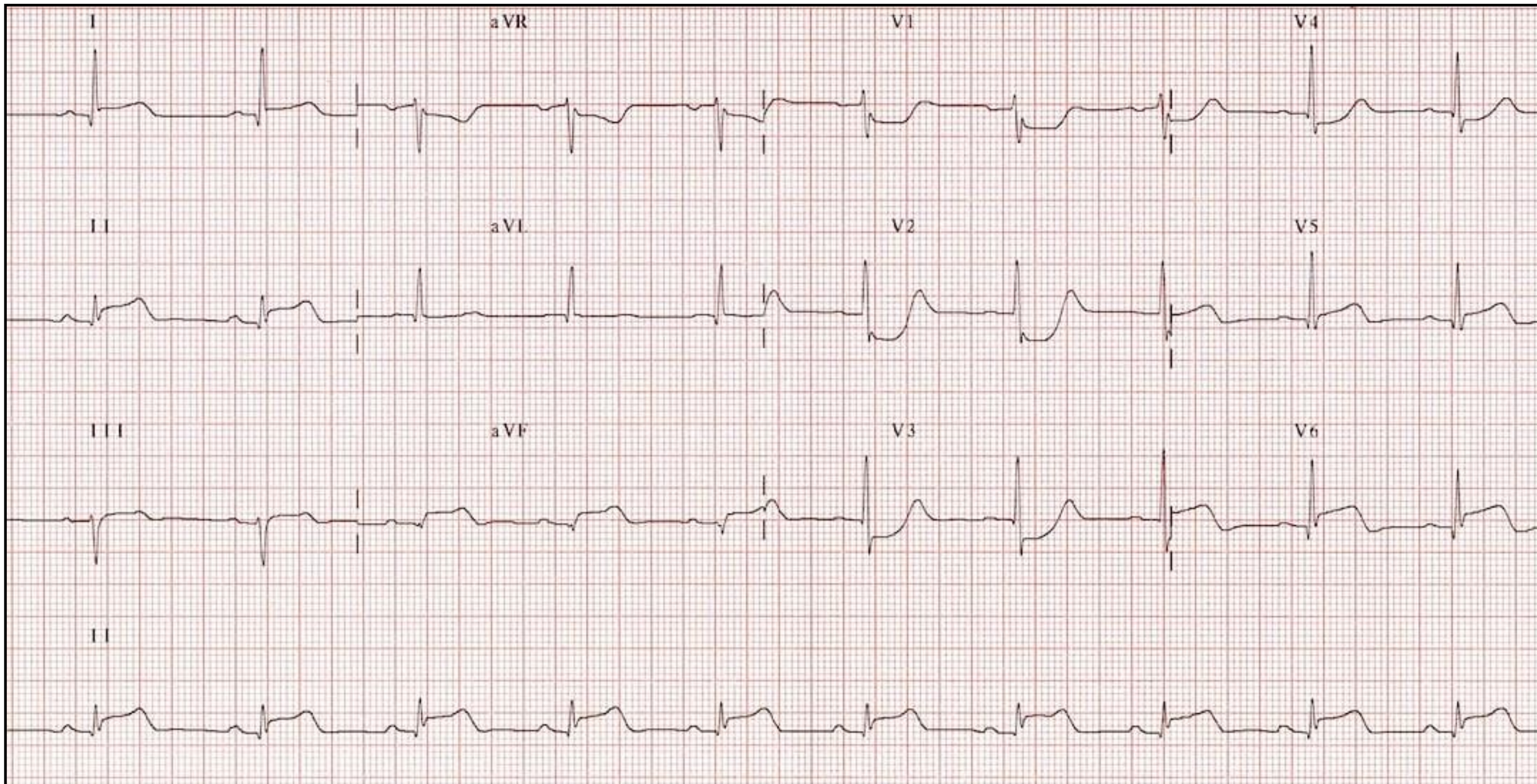
NON ST SEGMENT ELEVATION MYOCARDIAL INFARCTION



*STAGED: second procedure before discharge

EXAMPLE OF TYPICAL FIRE CASE #1: Monday, 9.30 am

- 77 years old, typical ongoing chest pain
- TTE: akinesia of the postero-lateral wall, LVEF 44%

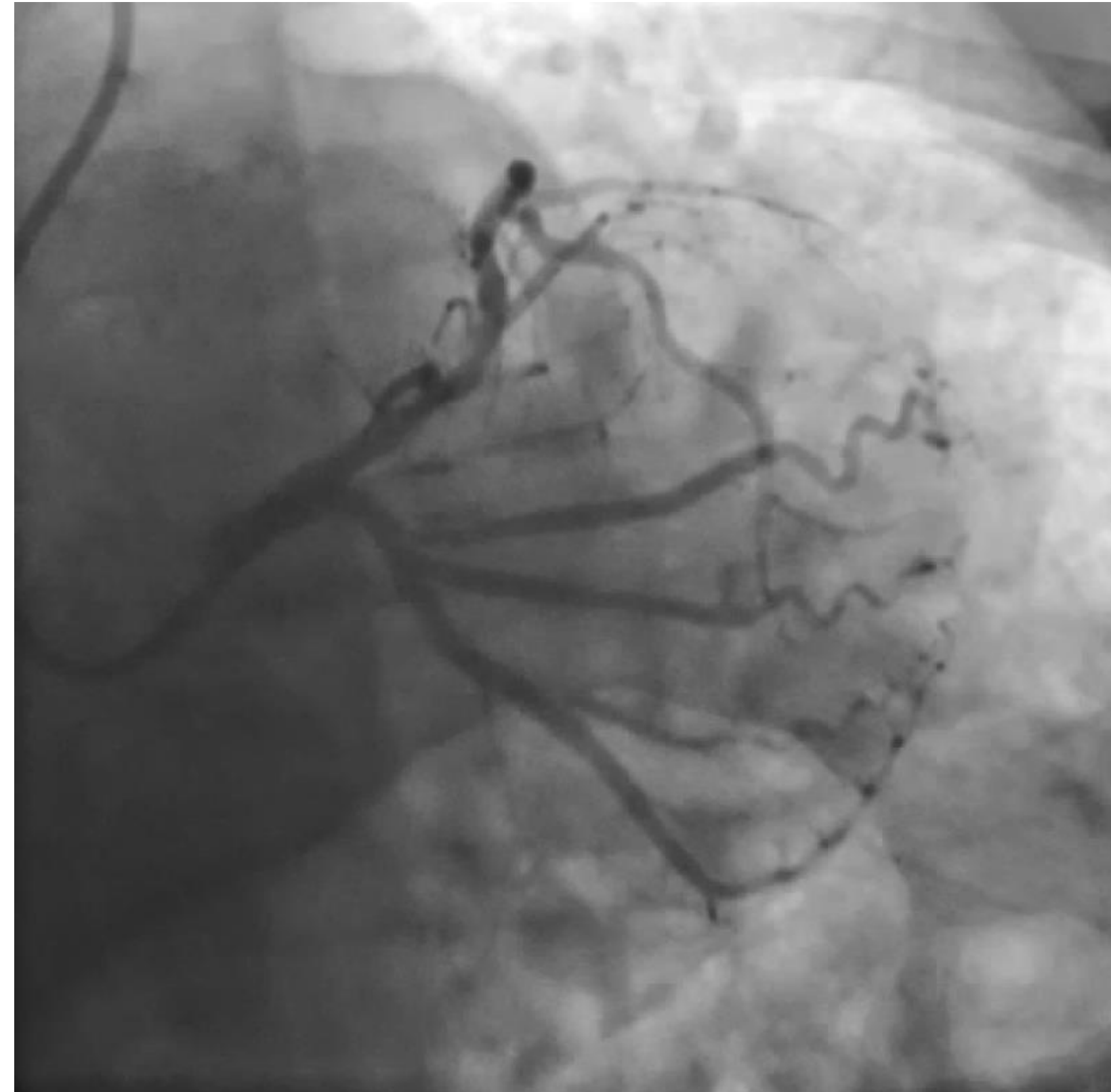


STEMI setting

ST SEGMENT ELEVATION MYOCARDIAL INFARCTION

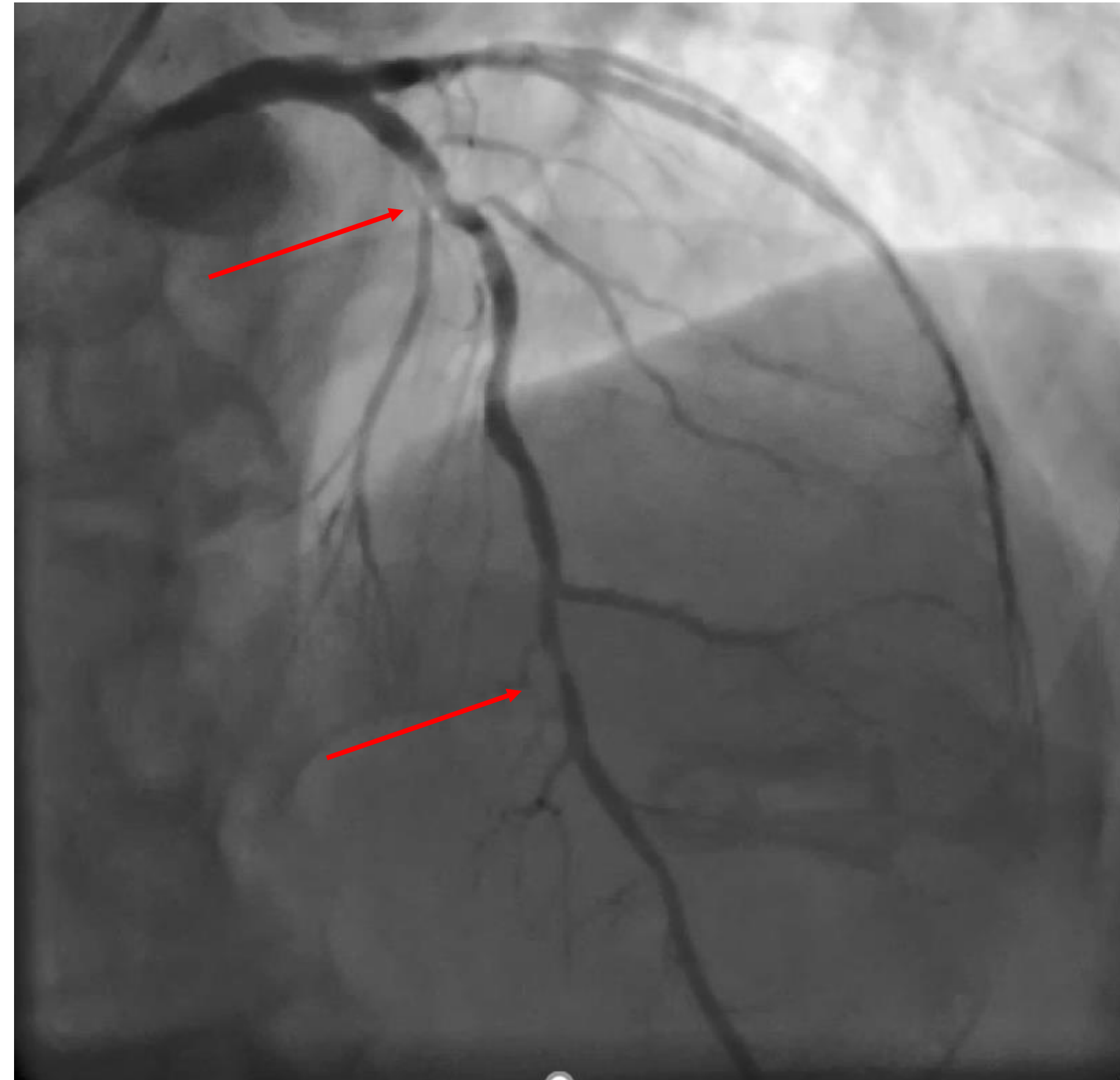


Culprit lesion treatment



Successful treatment of the culprit lesion with Supraflex 3x16

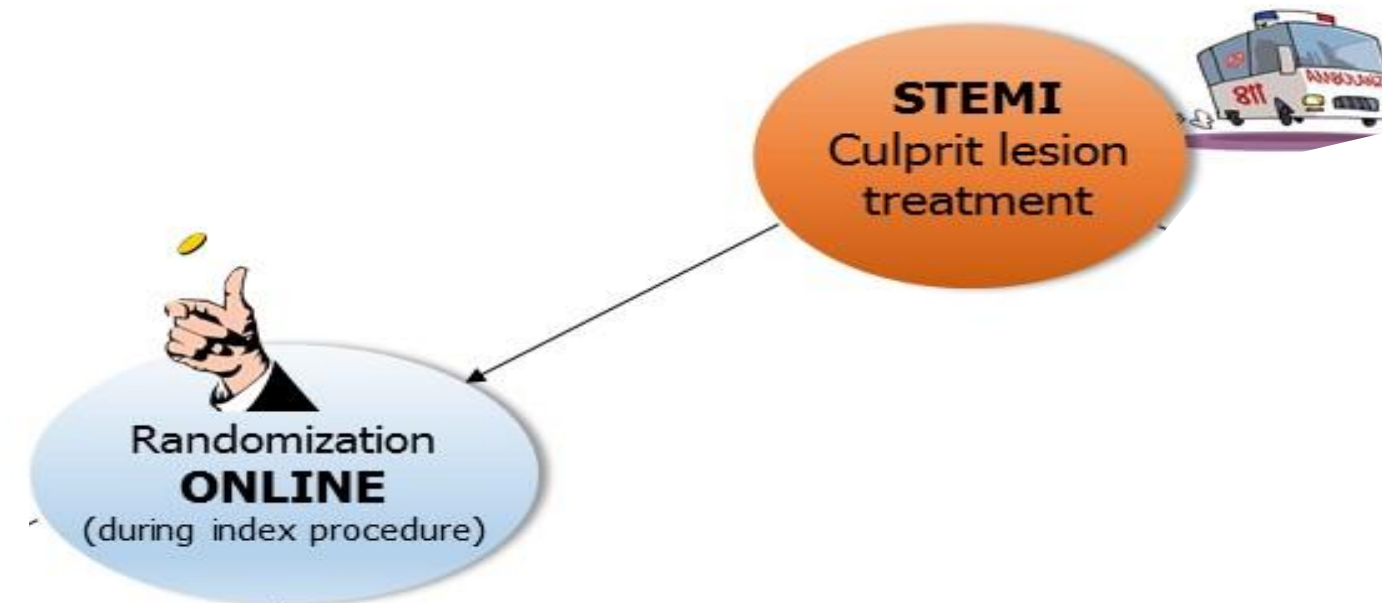
Coronary artery angiography – non culprit vessels




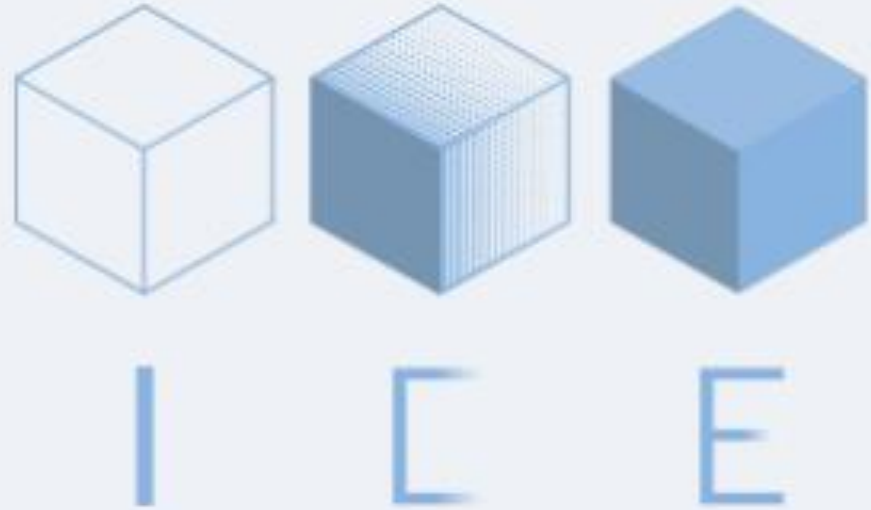
Non culprit lesions on LAD

STEMI setting


ST SEGMENT ELEVATION MYOCARDIAL INFARCTION




eCRF – Home page



Login to your account

Username 

Password 

[Forgot Password](#)

Advice Pharma Group SRL



eCRF – Randomization page

Inclusion criteria

*Age ≥75 years

☐ no ☐ yes

*Patient hospitalized for STEMI or NSTEMI

☐ no ☐ yes

*Multi-vessel disease at CAA

☐ no ☐ yes

*Successful treatment of culprit lesion

☐ no ☐ yes

Exclusion criteria

*Absence of clear culprit lesion

☐ no ☐ yes

*Planned surgical revascularization

☐ no ☐ yes

*Non-cardiovascular co-morbidity reducing life expectancy to < 1 year

☐ no ☐ yes

*Any factor precluding 1-year follow-up

☐ no ☐ yes

*Prior CABG

☐ no ☐ yes

Randomization

*Hospital admission date

*Randomization date

*ST-segment elevation MI

☐ no ☐ yes

*Male sex

☐ no ☐ yes

Previous

Next

Save

Print

Cancel

eCRF – Randomization page

Inclusion criteria

*Age ≥75 years

☐ no ☐ yes

*Patient hospitalized for STEMI or NSTEMI

☐ no ☐ yes

*Multi-vessel disease at CAA

☐ no ☐ yes

*Successful treatment of culprit lesion

☐ no ☐ yes

Exclusion criteria

*Absence of clear culprit lesion

☐ no ☐ yes

*Planned surgical revascularization

☐ no ☐ yes

*Non-cardiovascular co-morbidity reducing life expectancy to < 1 year

☐ no ☐ yes

*Any factor precluding 1-year follow-up

☐ no ☐ yes

*Prior CABG

☐ no ☐ yes

Randomization

*Hospital admission date

*Randomization date

*ST-segment elevation MI

☐ no ☐ yes

*Male sex

☐ no ☐ yes

CULPRIT ONLY TREATMENT

Previous

Next

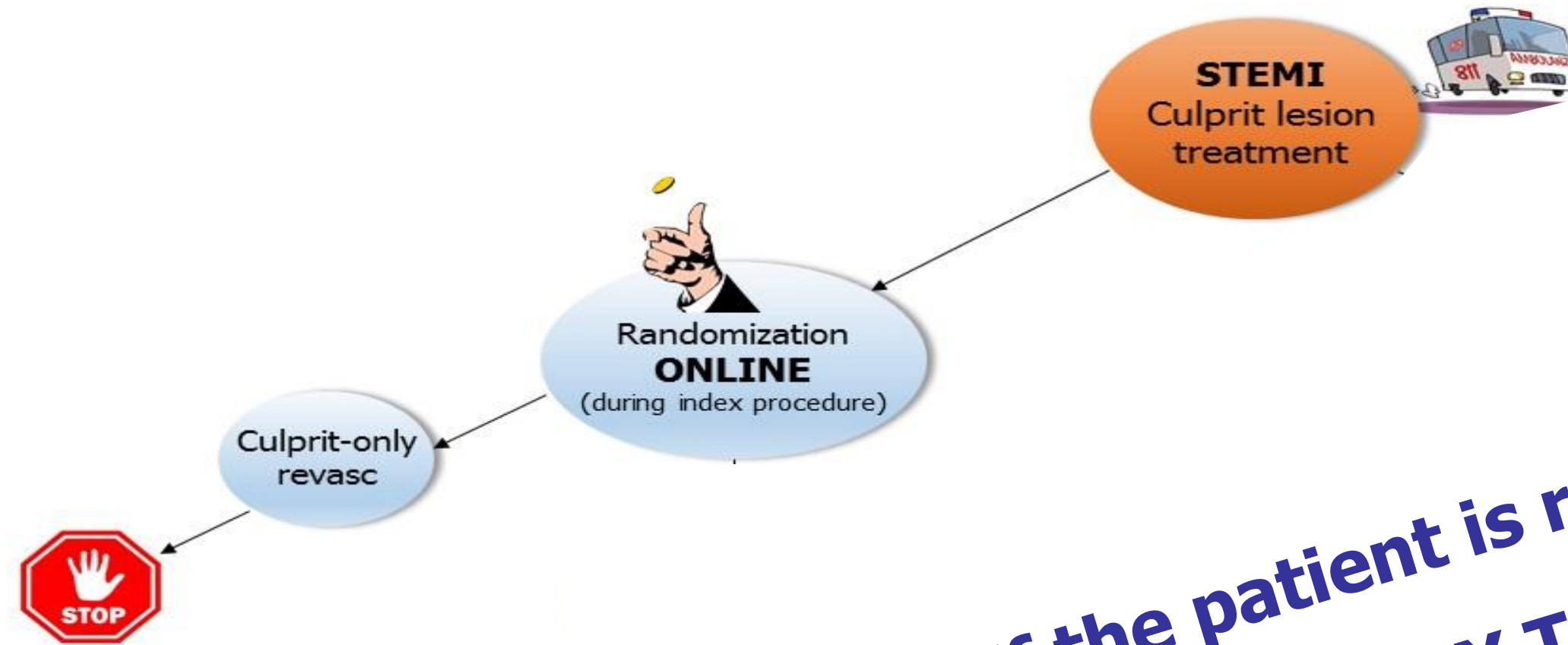
Save

Print

Cancel

STEMI setting

ST SEGMENT ELEVATION MYOCARDIAL INFARCTION



**If the patient is randomized to
«CULPRIT ONLY TREATMENT», the
procedure is over.
Do not treat the non culprit lesions!
Optimal medical therapy, physical
activity and follow-up**

eCRF – Randomization page

Inclusion criteria

*Age ≥75 years

☐ no ☐ yes

*Patient hospitalized for STEMI or NSTEMI

☐ no ☐ yes

*Multi-vessel disease at CAA

☐ no ☐ yes

*Successful treatment of culprit lesion

☐ no ☐ yes

Exclusion criteria

*Absence of clear culprit lesion

☐ no ☐ yes

*Planned surgical revascularization

☐ no ☐ yes

*Non-cardiovascular co-morbidity reducing life expectancy to < 1 year

☐ no ☐ yes

*Any factor precluding 1-year follow-up

☐ no ☐ yes

*Prior CABG

☐ no ☐ yes

Randomization

*Hospital admission date

*Randomization date

*ST-segment elevation MI

☐ no ☐ yes

*Male sex

☐ no ☐ yes

FUNCTIONAL COMPLETE

Previous

Next

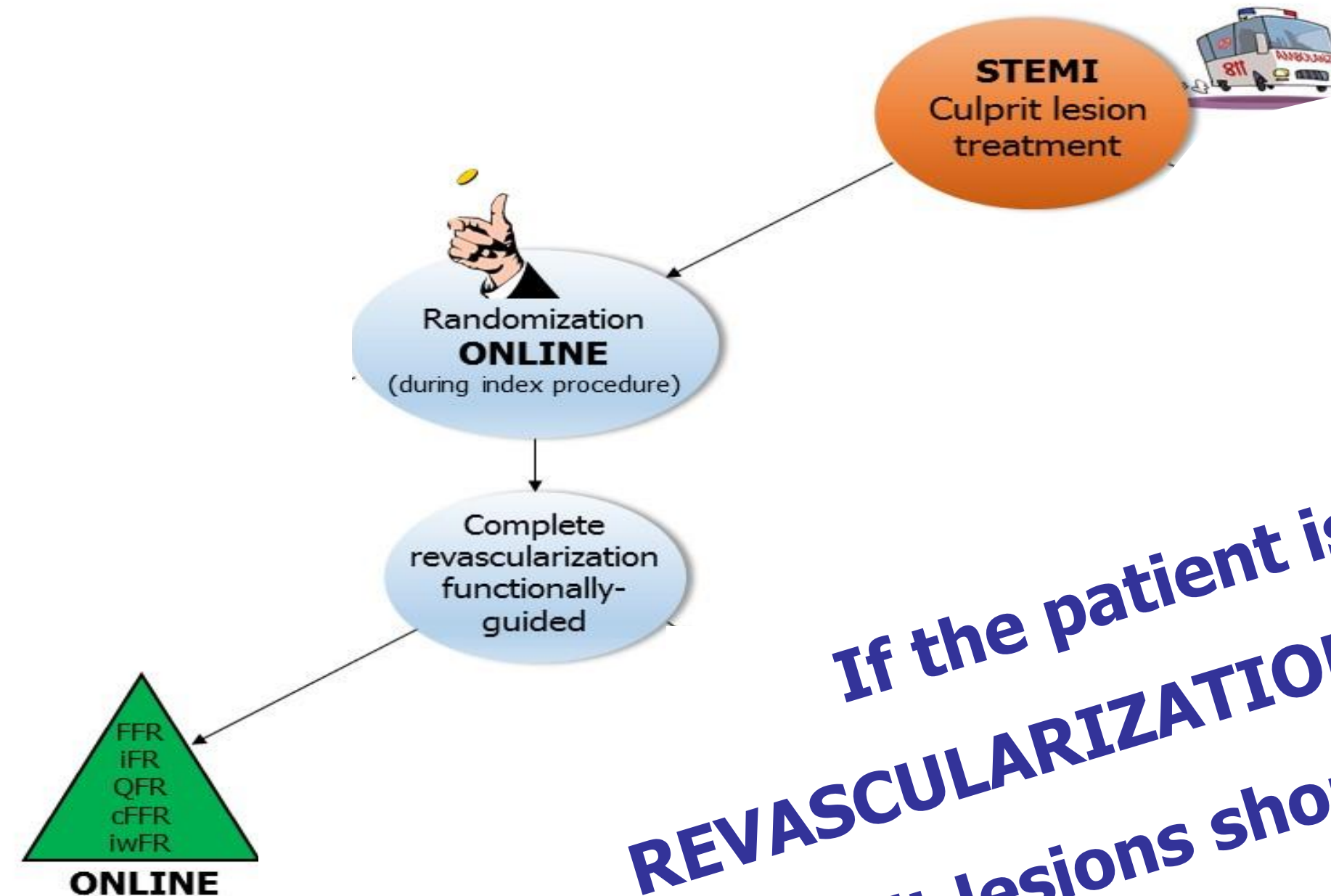
Save

Print

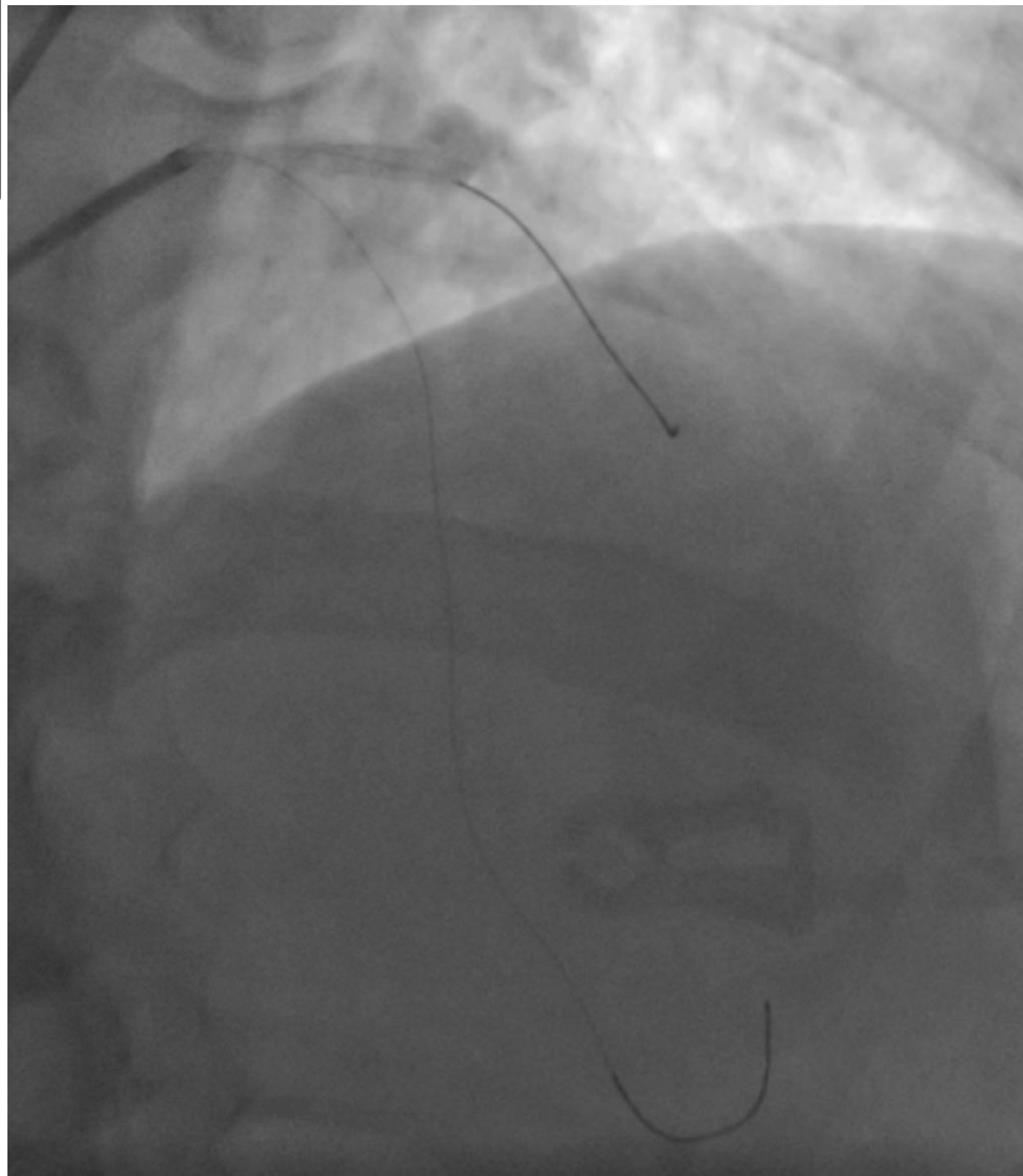
Cancel

STEMI setting

ST SEGMENT ELEVATION MYOCARDIAL INFARCTION

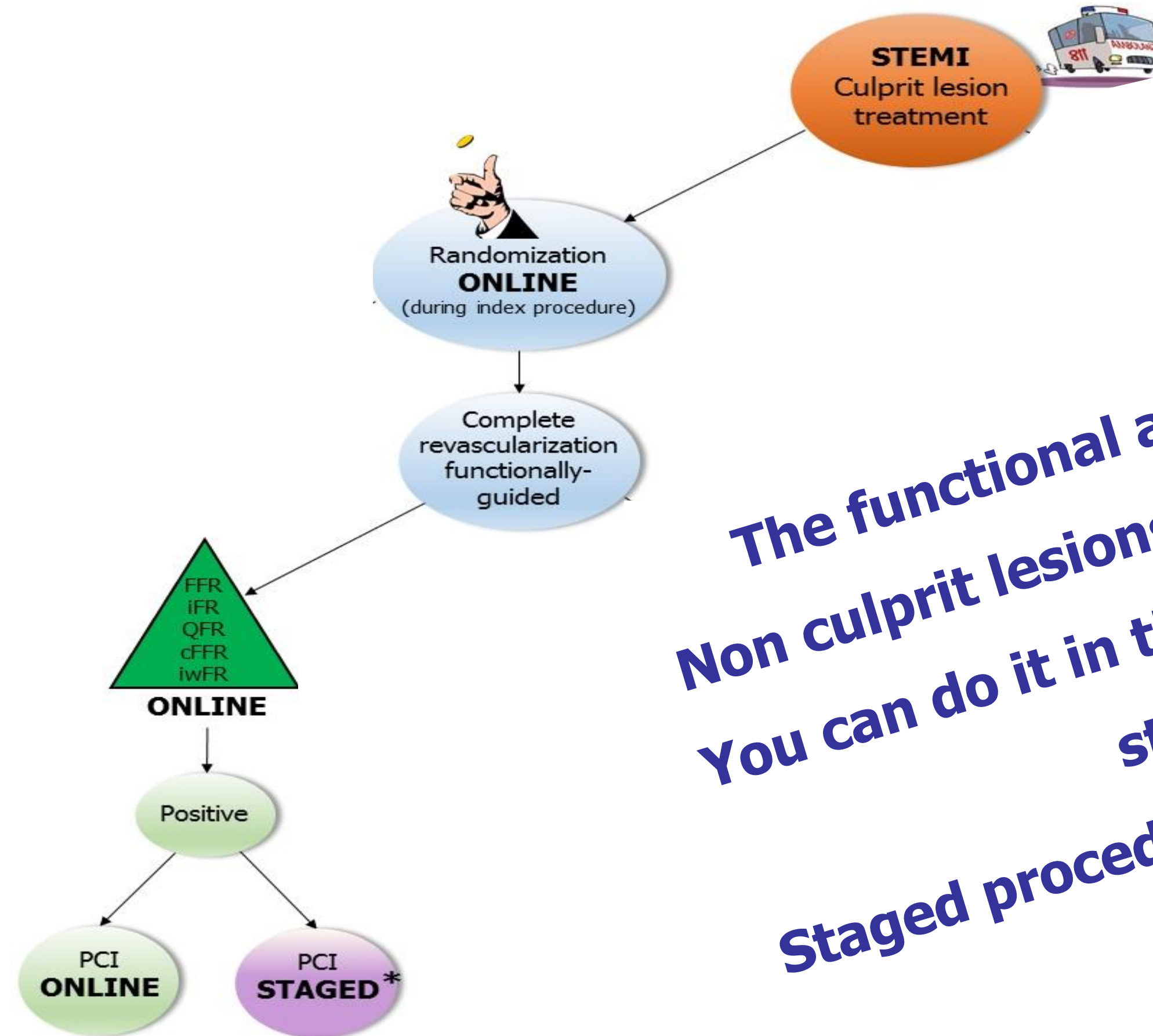


If the patient is randomized to «**COMPLETE REVASCULARIZATION FUNCTIONALLY-GUIDED**», the non culprit lesions should be interrogated with physiology! You can do it in the same index procedure (as in this case) or in a staged procedure Staged procedure should be before the hospital discharge



STEMI setting

ST SEGMENT ELEVATION MYOCARDIAL INFARCTION



The functional assessment was positive !!!
Non culprit lesions should be treated with PCI !!!
You can do it in the same index procedure or in a staged procedure !!!
Staged procedure should be before the hospital discharge

*STAGED: second procedure before discharge



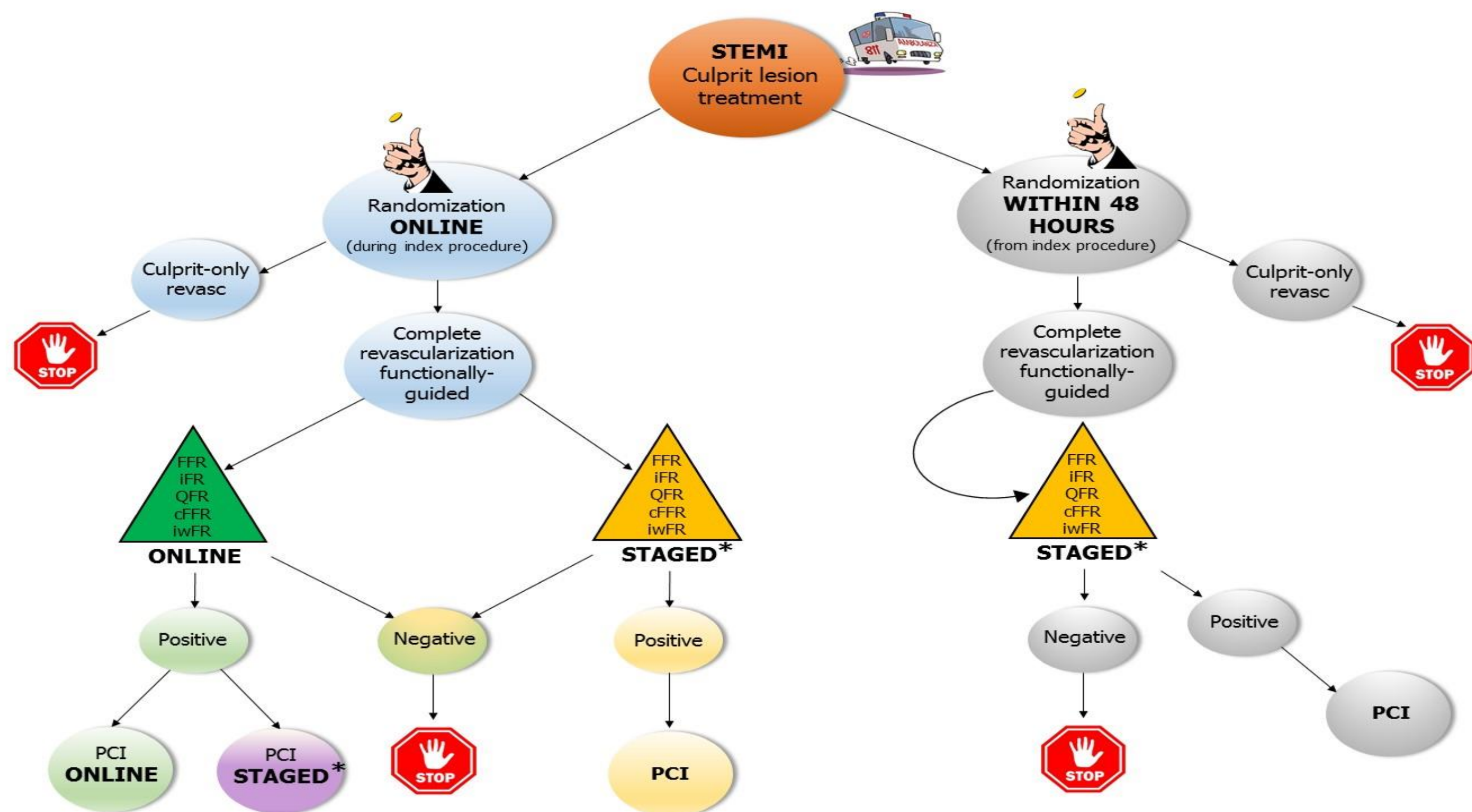
Functional versus Culprit-only Revascularization in Elderly Patients with Myocardial Infarction and Multivessel Disease

Study Contact Information:

Simone Biscaglia

email: bscsmn@unife.it phone: +390532236450

ST SEGMENT ELEVATION MYOCARDIAL INFARCTION



*STAGED: second procedure before discharge

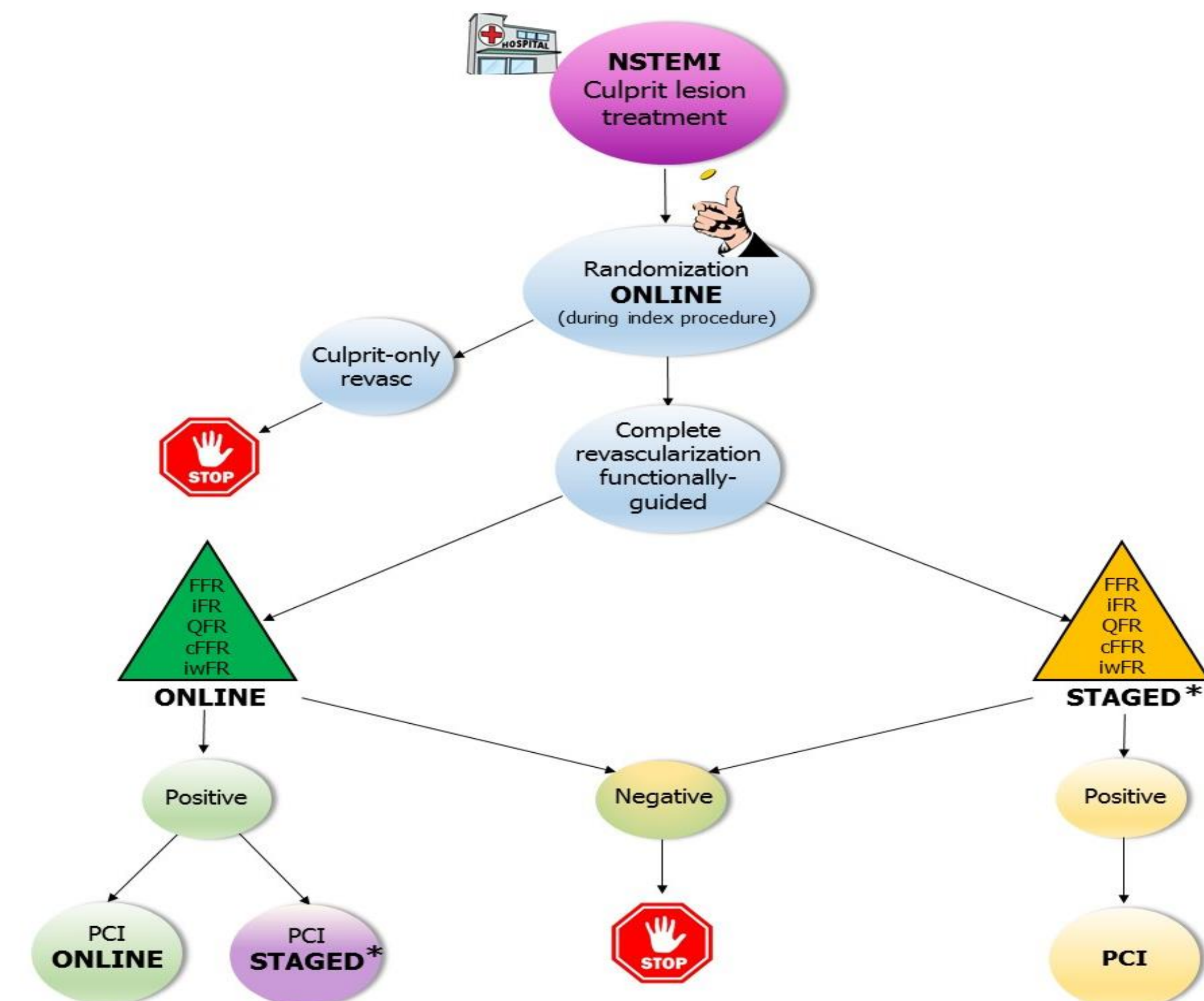
Inclusion criteria

- Patients ≥ 75 years
- MI (STE or NSTEMI) with indication to invasive management
- Multi-vessel disease defined as at least 1 non-culprit coronary artery lesion at least 2.5 mm in diameter deemed at visual estimation with a diameter stenosis % ranging from 50 to 99% amenable to successful treatment with PCI
- Successful treatment of culprit lesion

Exclusion criteria

- Planned surgical revascularization OR Left Main lesion as non-culprit
- Non-cardiovascular co-morbidity reducing life expectancy to < 1 year
- Any factor precluding 1-year follow-up
- Prior Coronary Artery Bypass Graft (CABG) Surgery
- Impossibility to identify a clear culprit lesion

NON ST SEGMENT ELEVATION MYOCARDIAL INFARCTION



*STAGED: second procedure before discharge