



Functional versus Culprit-only Revascularization in Elderly Patients with Myocardial Infarction and Multivessel Disease: the **FIRE Trial**

STUDY PROCEDURES



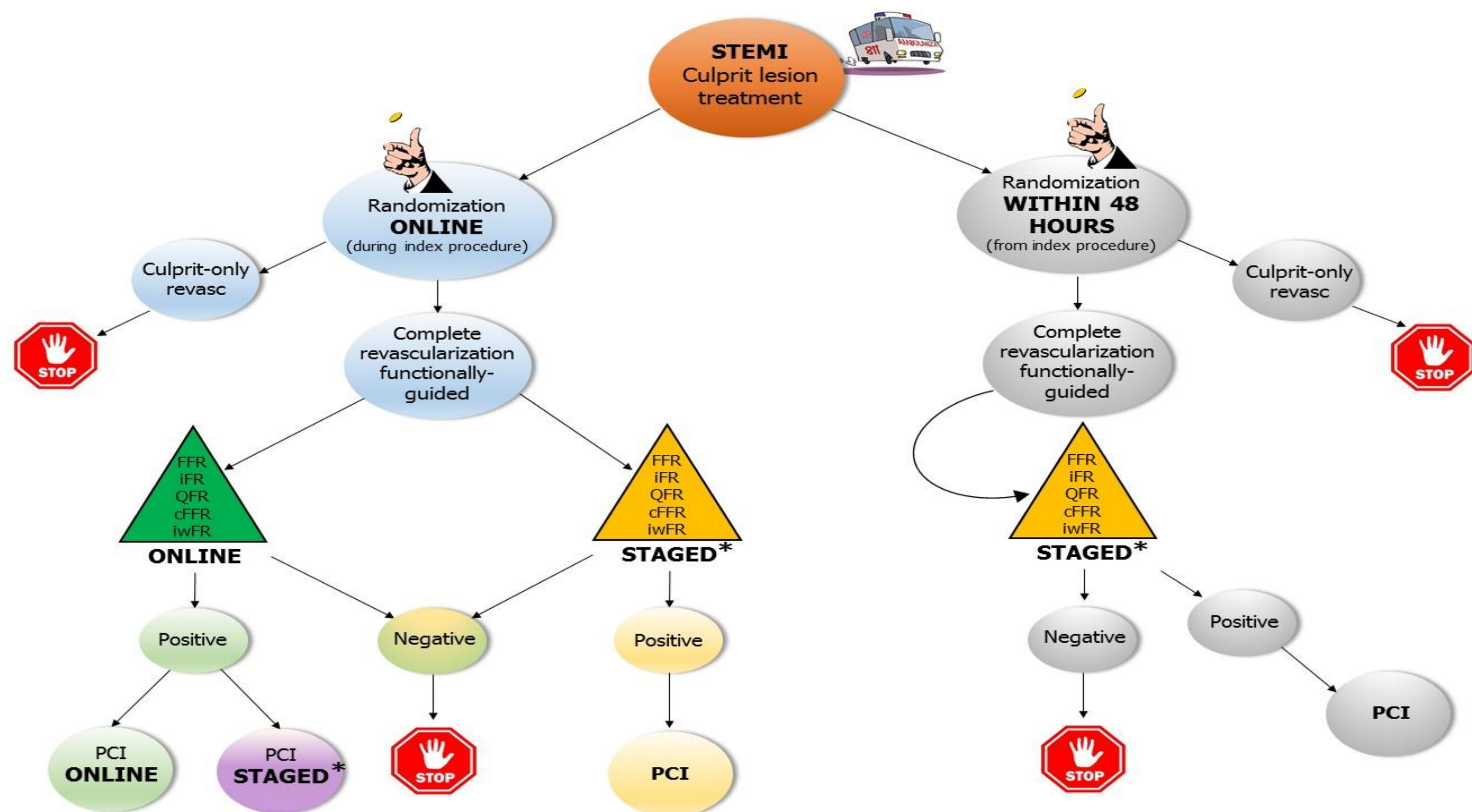
Functional versus Culprit-only Revascularization in Elderly Patients with Myocardial Infarction and Multivessel Disease

Study Contact Information:

Simone Biscaglia

email: bscsmn@unife.it phone: +390532236450

ST SEGMENT ELEVATION MYOCARDIAL INFARCTION



*STAGED: second procedure before discharge

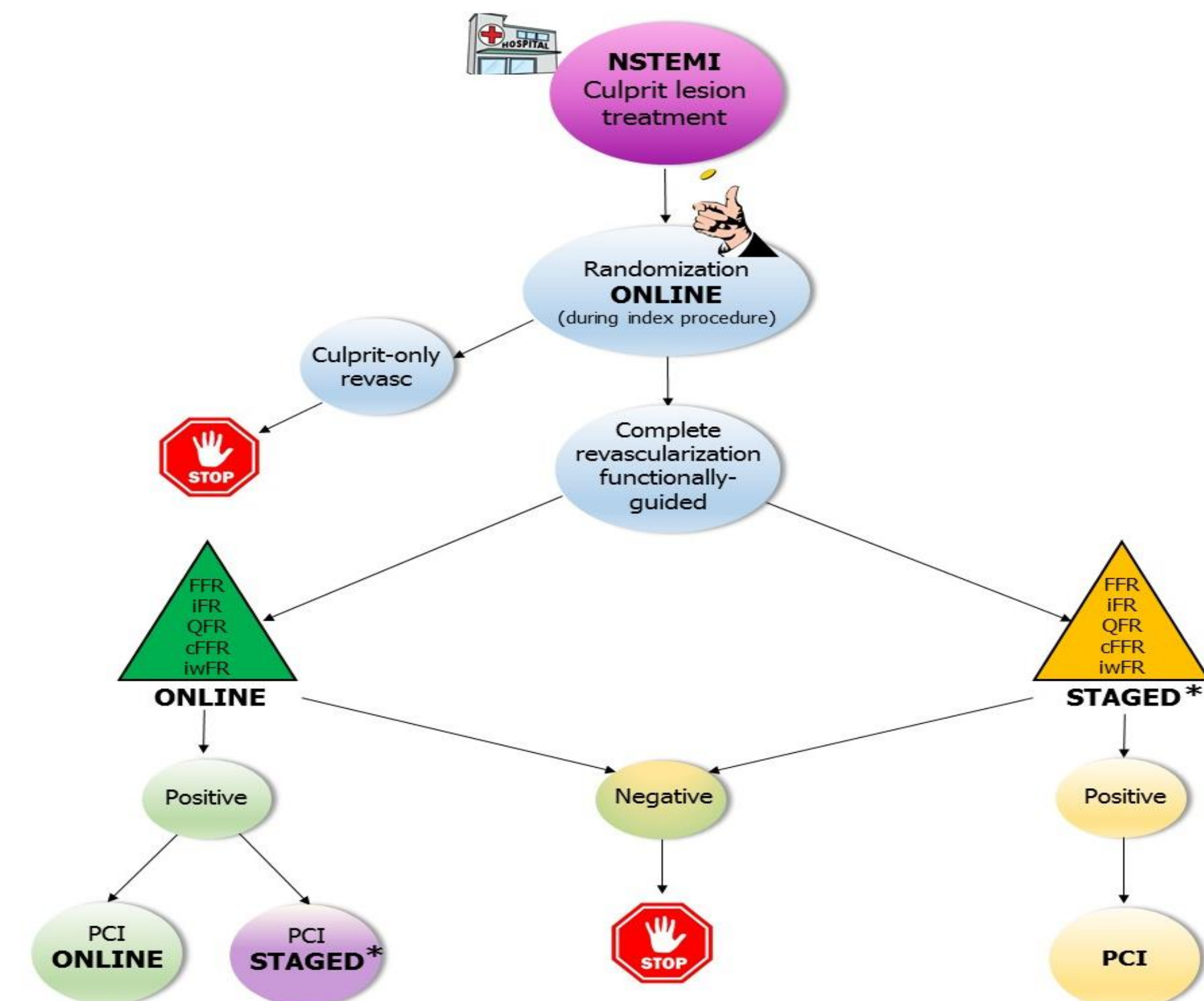
Inclusion criteria

- Patients ≥ 75 years
- MI (STE or NSTEMI) with indication to invasive management
- Multi-vessel disease defined as at least 1 non-culprit coronary artery lesion at least 2.5 mm in diameter deemed at visual estimation with a diameter stenosis % ranging from 50 to 99% amenable to successful treatment with PCI
- Successful treatment of culprit lesion

Exclusion criteria

- Planned surgical revascularization OR Left Main lesion as non-culprit
- Non-cardiovascular co-morbidity reducing life expectancy to < 1 year
- Any factor precluding 1-year follow-up
- Prior Coronary Artery Bypass Graft (CABG) Surgery
- Impossibility to identify a clear culprit lesion

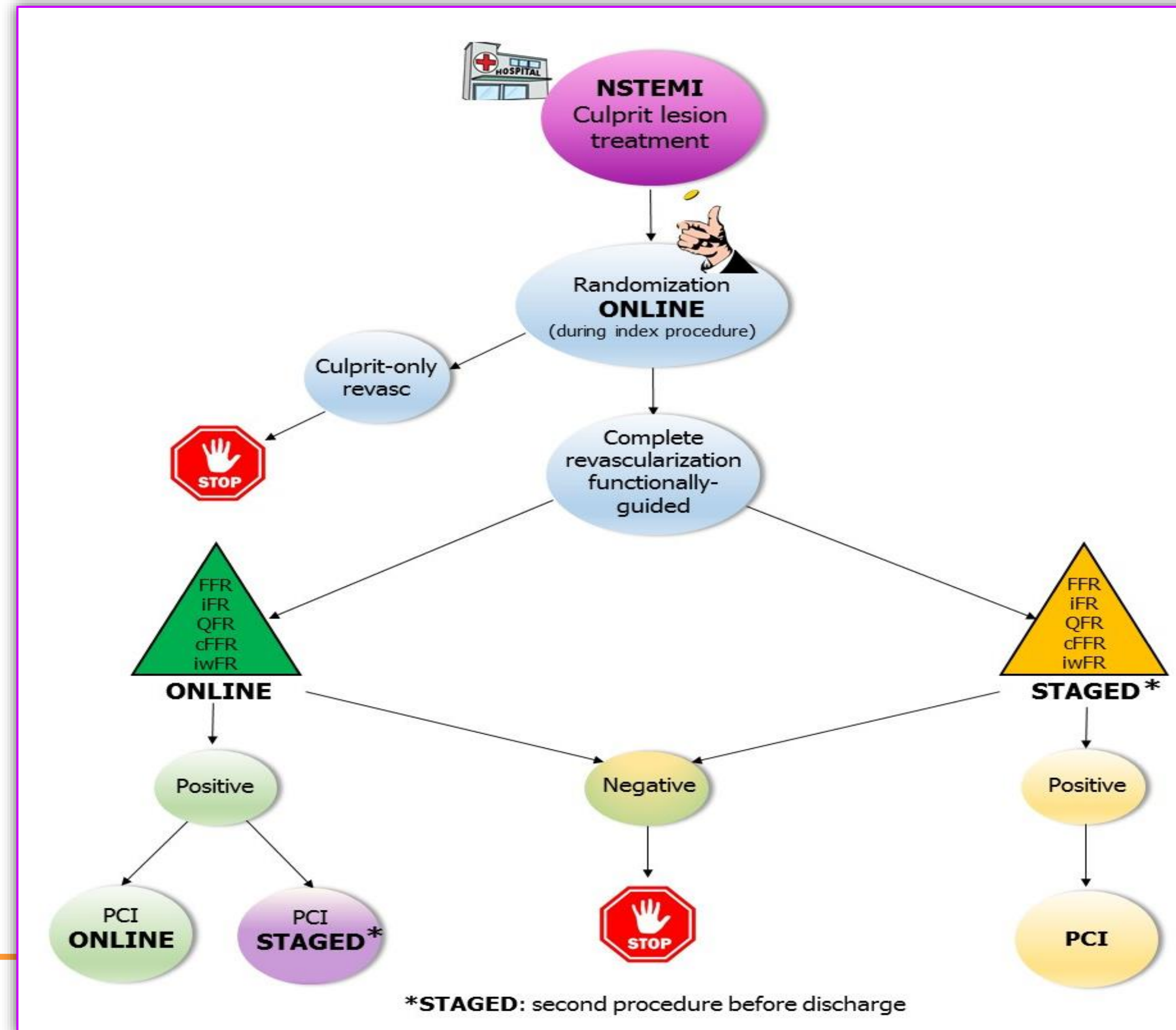
NON ST SEGMENT ELEVATION MYOCARDIAL INFARCTION



*STAGED: second procedure before discharge

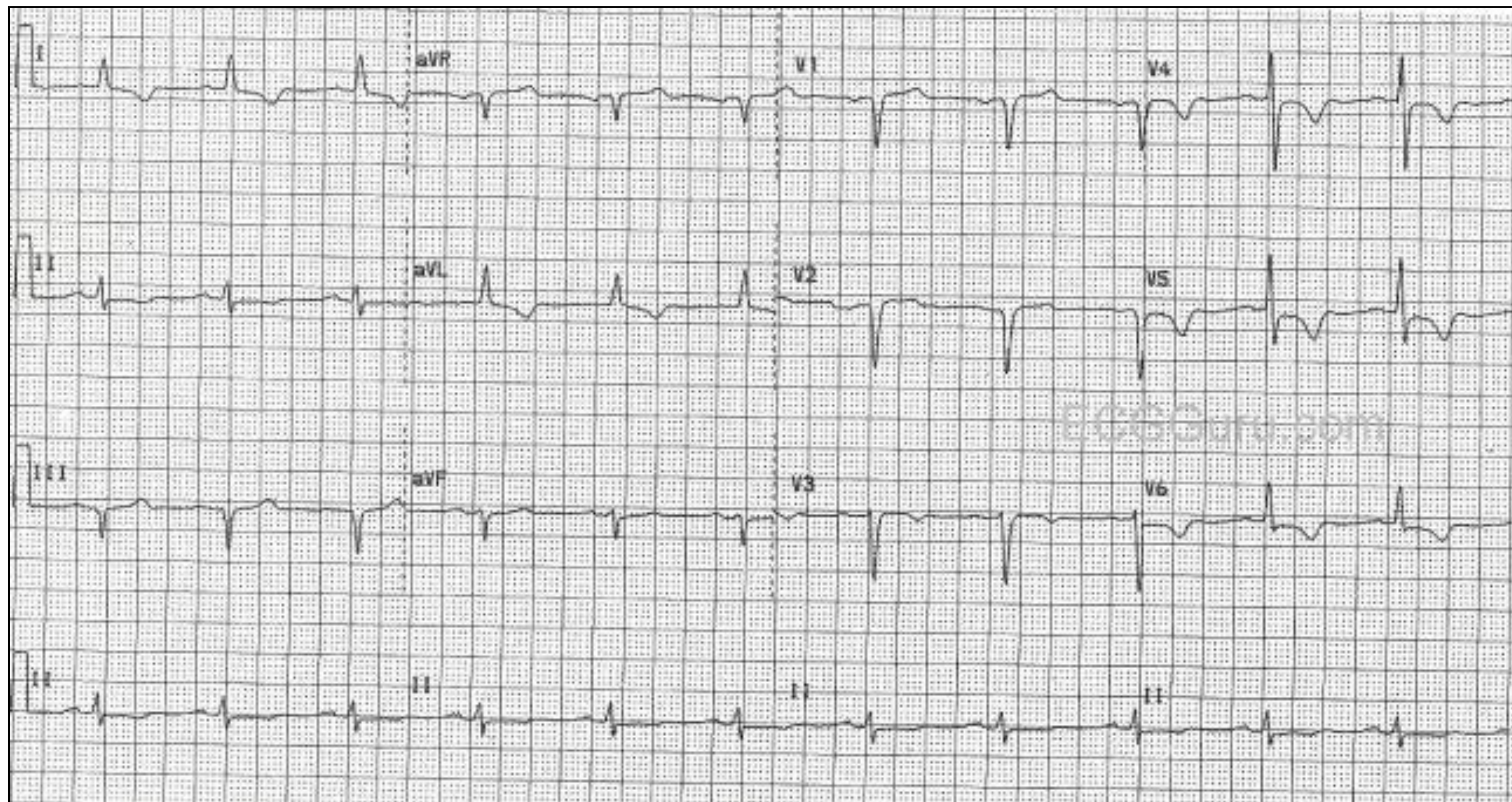
NSTEMI setting

NON ST SEGMENT ELEVATION MYOCARDIAL INFARCTION

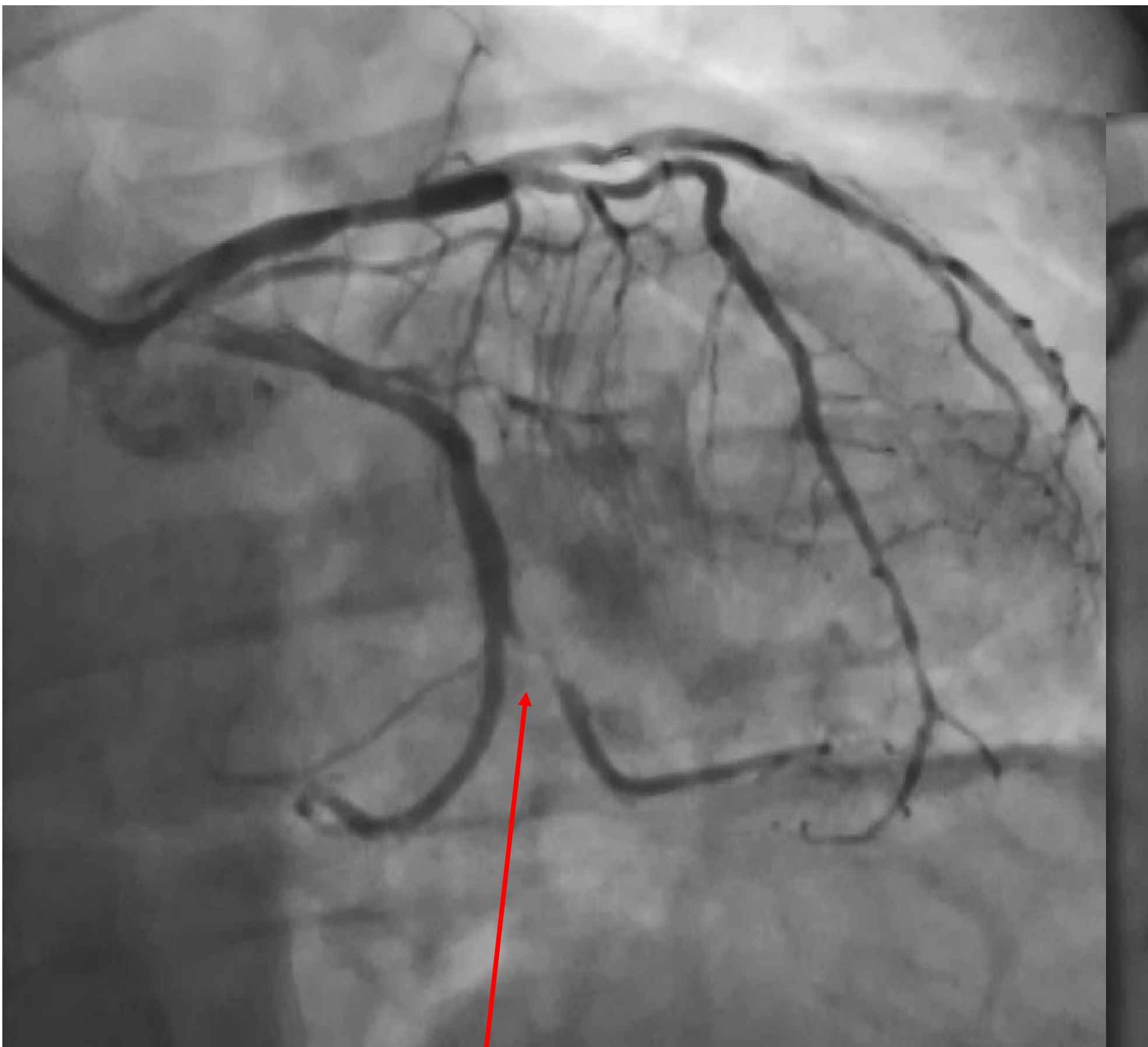


NSTEMI FIRE CASE: Friday, 11.00 AM

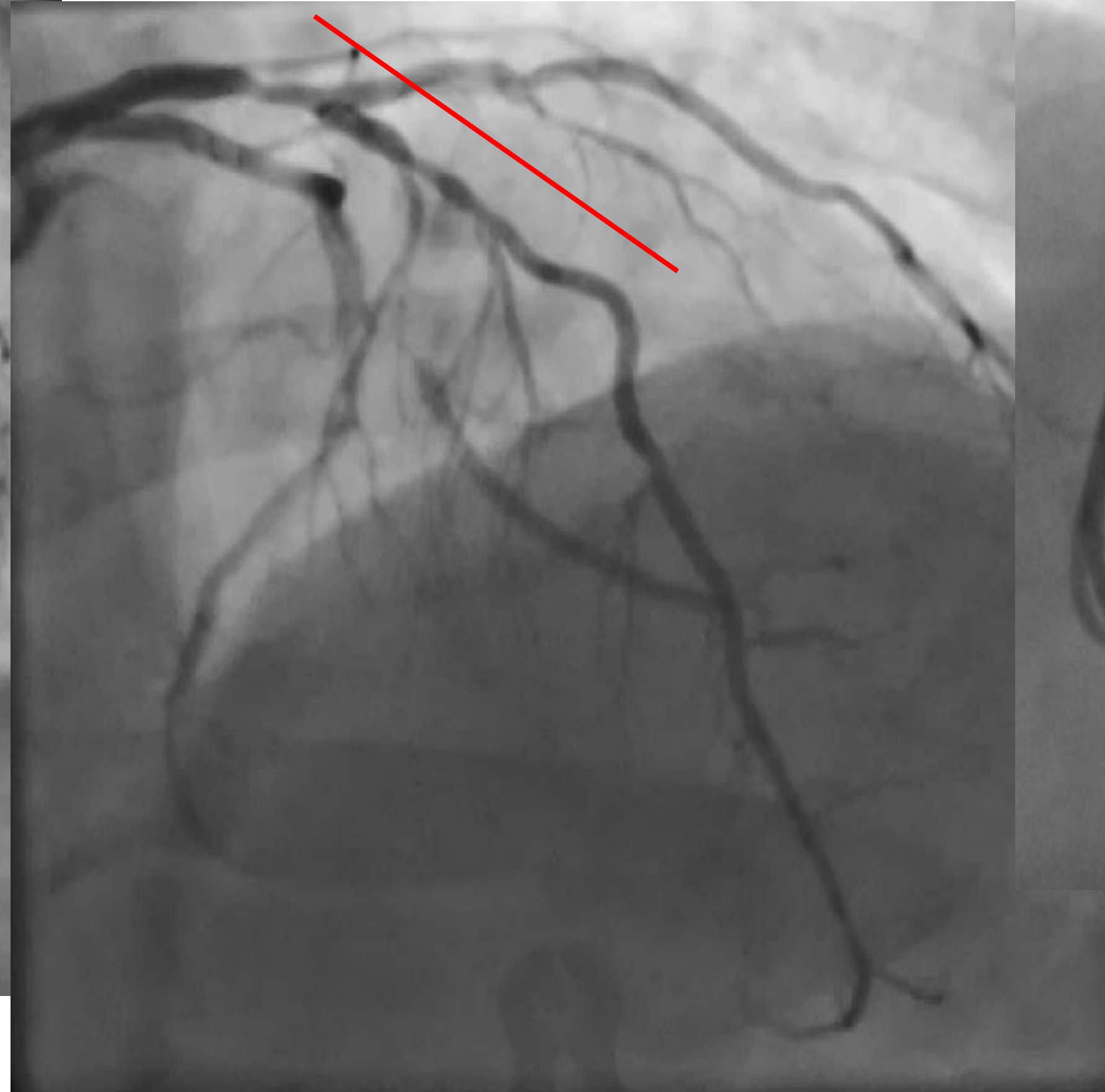
- 81 years old, typical chest pain, TnI-hs 3214 pg/ml
- TTE: hypokinesia of the posterior-inferior wall, LVEF 47%



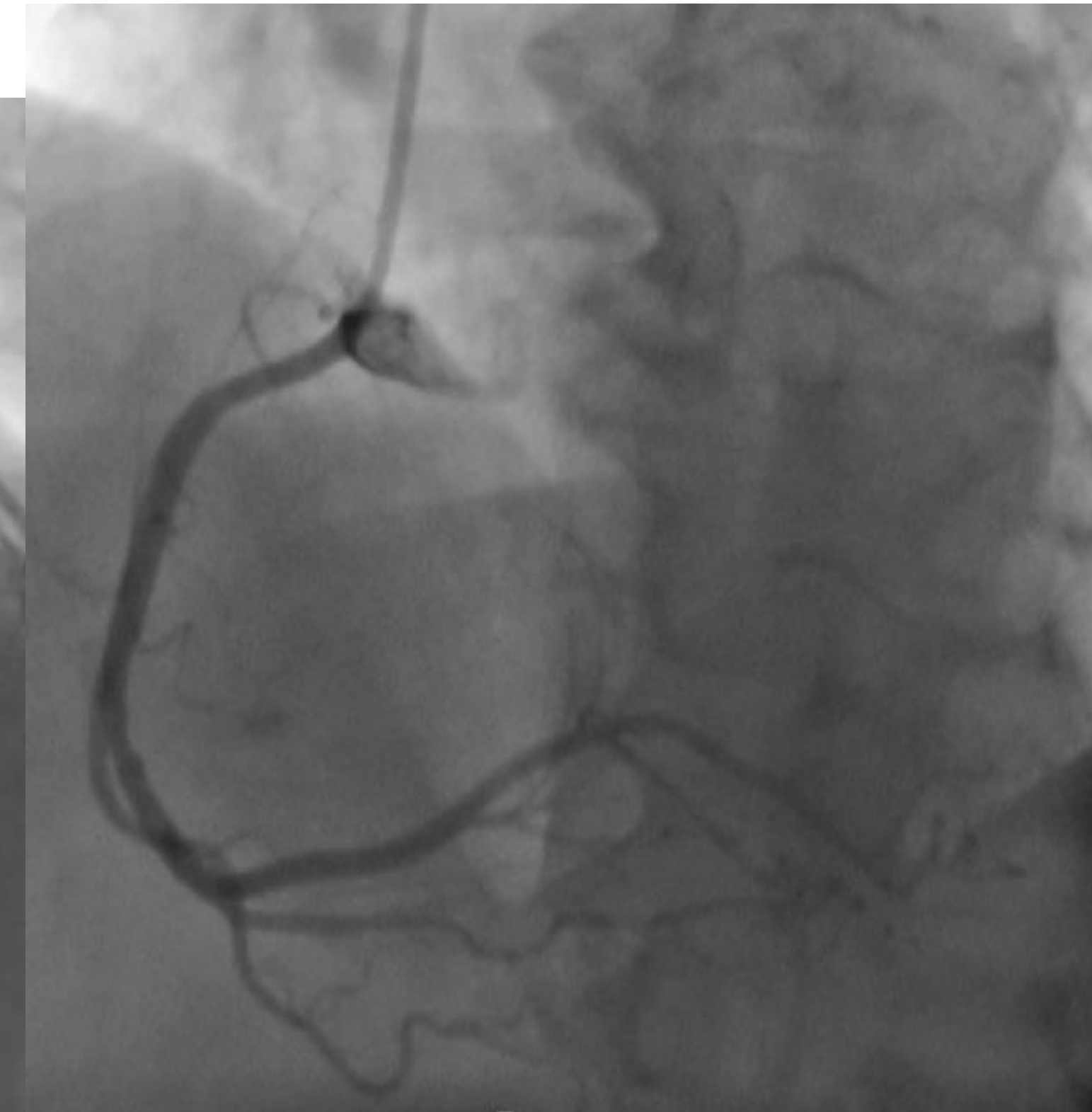
Coronary artery angiography



Culprit lesion



Non culprit lesion on LAD



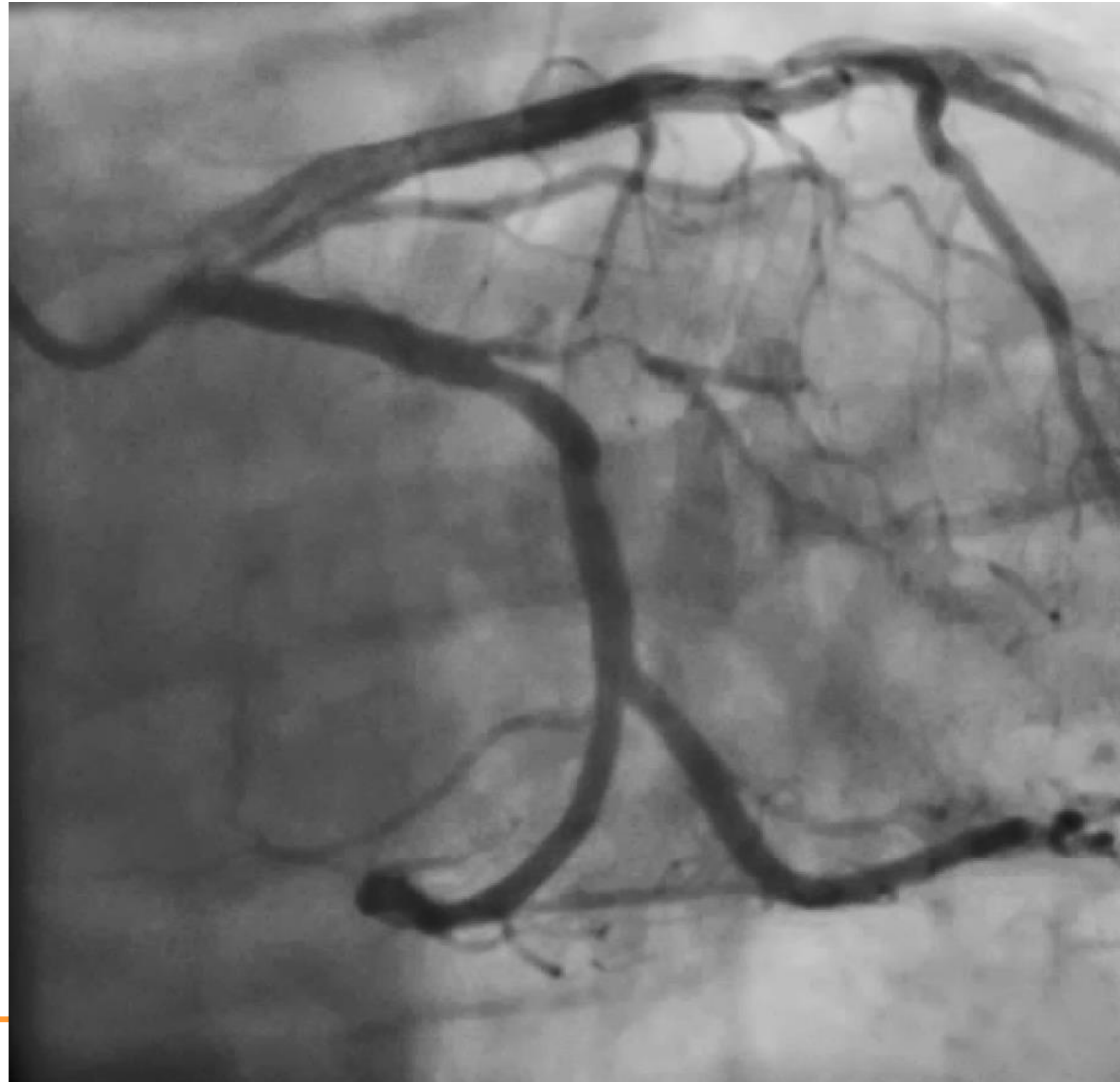
NSTEMI setting

NON ST SEGMENT ELEVATION MYOCARDIAL INFARCTION



NSTEMI
Culprit lesion
treatment

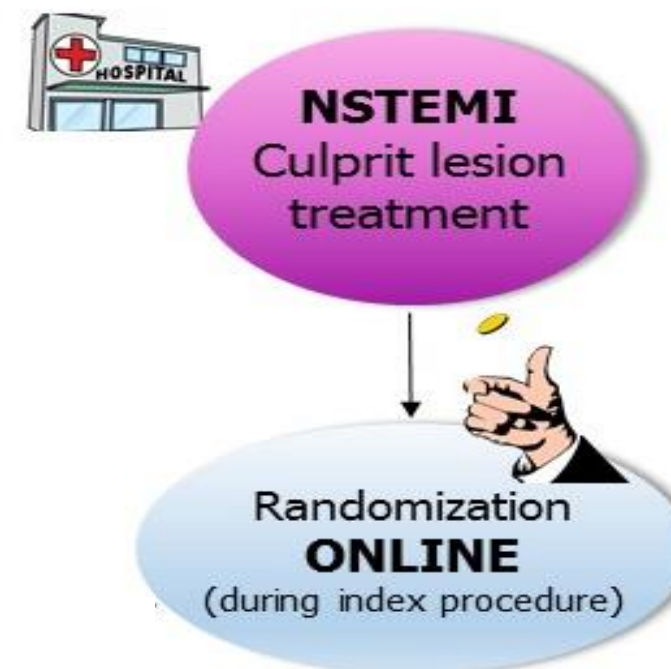
Trattamento culprit



**Successfull treatment of the culprit
lesion with PCI and implantation of
Supraflex 3.5x24**

NSTEMI setting

NON ST SEGMENT ELEVATION MYOCARDIAL INFARCTION



eCRF – Randomization page

Inclusion criteria

*Age ≥75 years

☐ no ☐ yes

*Patient hospitalized for STEMI or NSTEMI

☐ no ☐ yes

*Multi-vessel disease at CAA

☐ no ☐ yes

*Successful treatment of culprit lesion

☐ no ☐ yes

Exclusion criteria

*Absence of clear culprit lesion

☐ no ☐ yes

*Planned surgical revascularization

☐ no ☐ yes

*Non-cardiovascular co-morbidity reducing life expectancy to < 1 year

☐ no ☐ yes

*Any factor precluding 1-year follow-up

☐ no ☐ yes

*Prior CABG

☐ no ☐ yes

Randomization

*Hospital admission date

*Randomization date

*ST-segment elevation MI

☐ no ☐ yes

*Male sex

☐ no ☐ yes

CULPRIT ONLY TREATMENT

Previous

Next

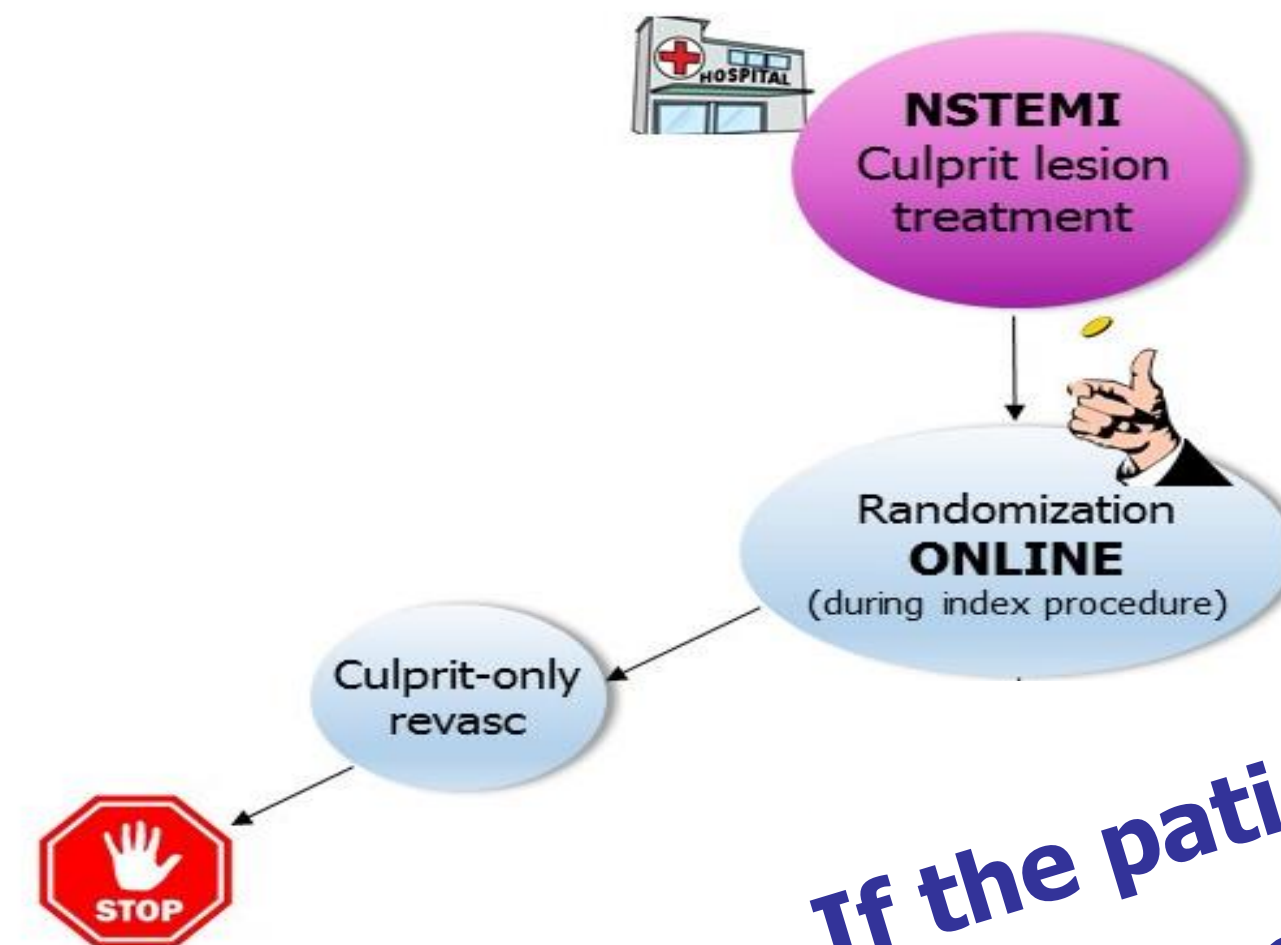
Save

Print

Cancel

NSTEMI setting

NON ST SEGMENT ELEVATION MYOCARDIAL INFARCTION



**If the patient is randomized to
«CULPRIT ONLY TREATMENT», the
procedure is over.
Do not treat the non culprit lesions!
Optimal medical therapy, physical
activity and follow-up**

eCRF – Randomization page

Inclusion criteria

*Age ≥75 years

☐ no ☐ yes

*Patient hospitalized for STEMI or NSTEMI

☐ no ☐ yes

*Multi-vessel disease at CAA

☐ no ☐ yes

*Successful treatment of culprit lesion

☐ no ☐ yes

Exclusion criteria

*Absence of clear culprit lesion

☐ no ☐ yes

*Planned surgical revascularization

☐ no ☐ yes

*Non-cardiovascular co-morbidity reducing life expectancy to < 1 year

☐ no ☐ yes

*Any factor precluding 1-year follow-up

☐ no ☐ yes

*Prior CABG

☐ no ☐ yes

Randomization

*Hospital admission date

*Randomization date

*ST-segment elevation MI

☐ no ☐ yes

*Male sex

☐ no ☐ yes

FUNCTIONAL COMPLETE

Previous

Next

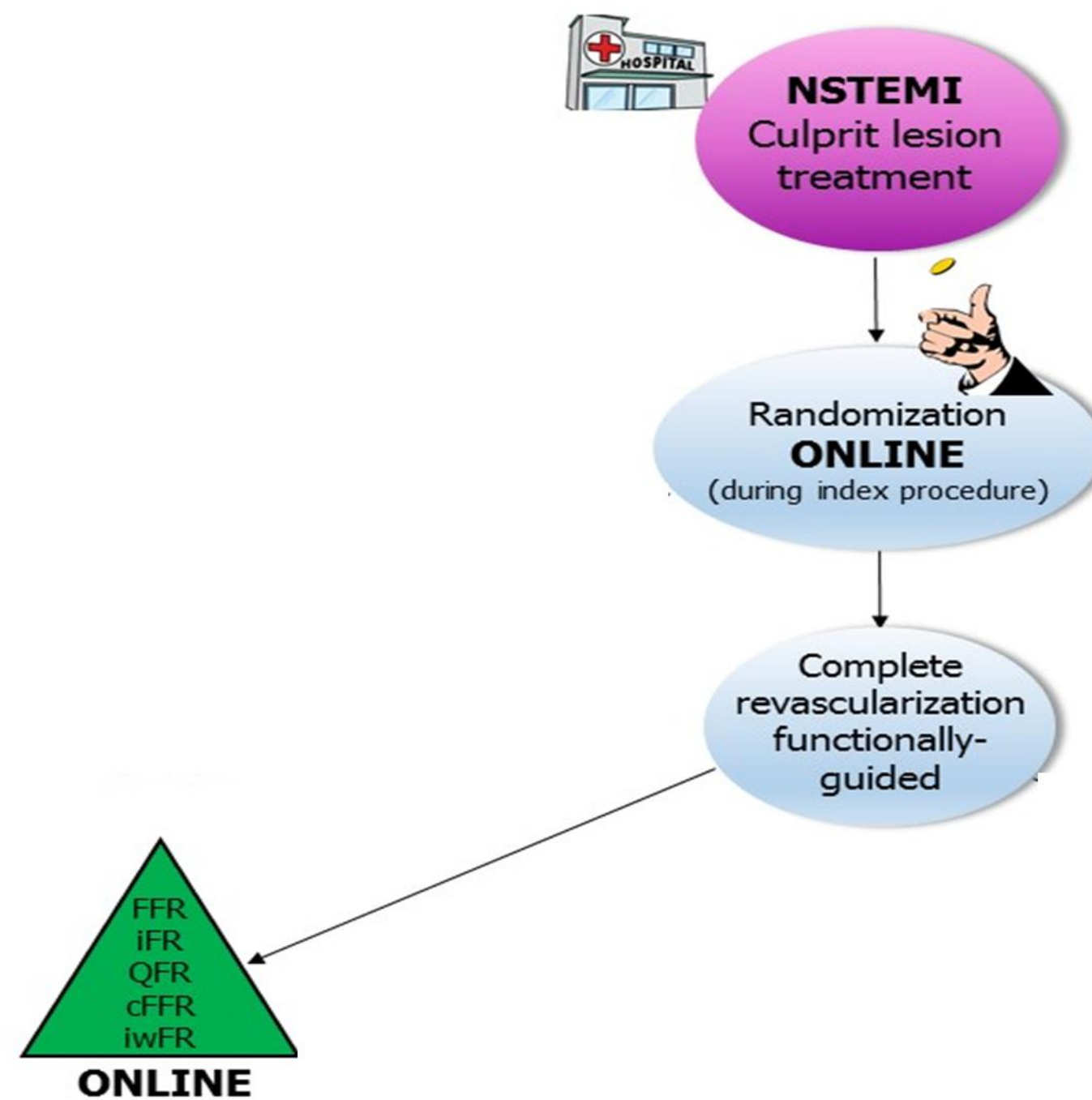
Save

Print

Cancel

NSTEMI setting

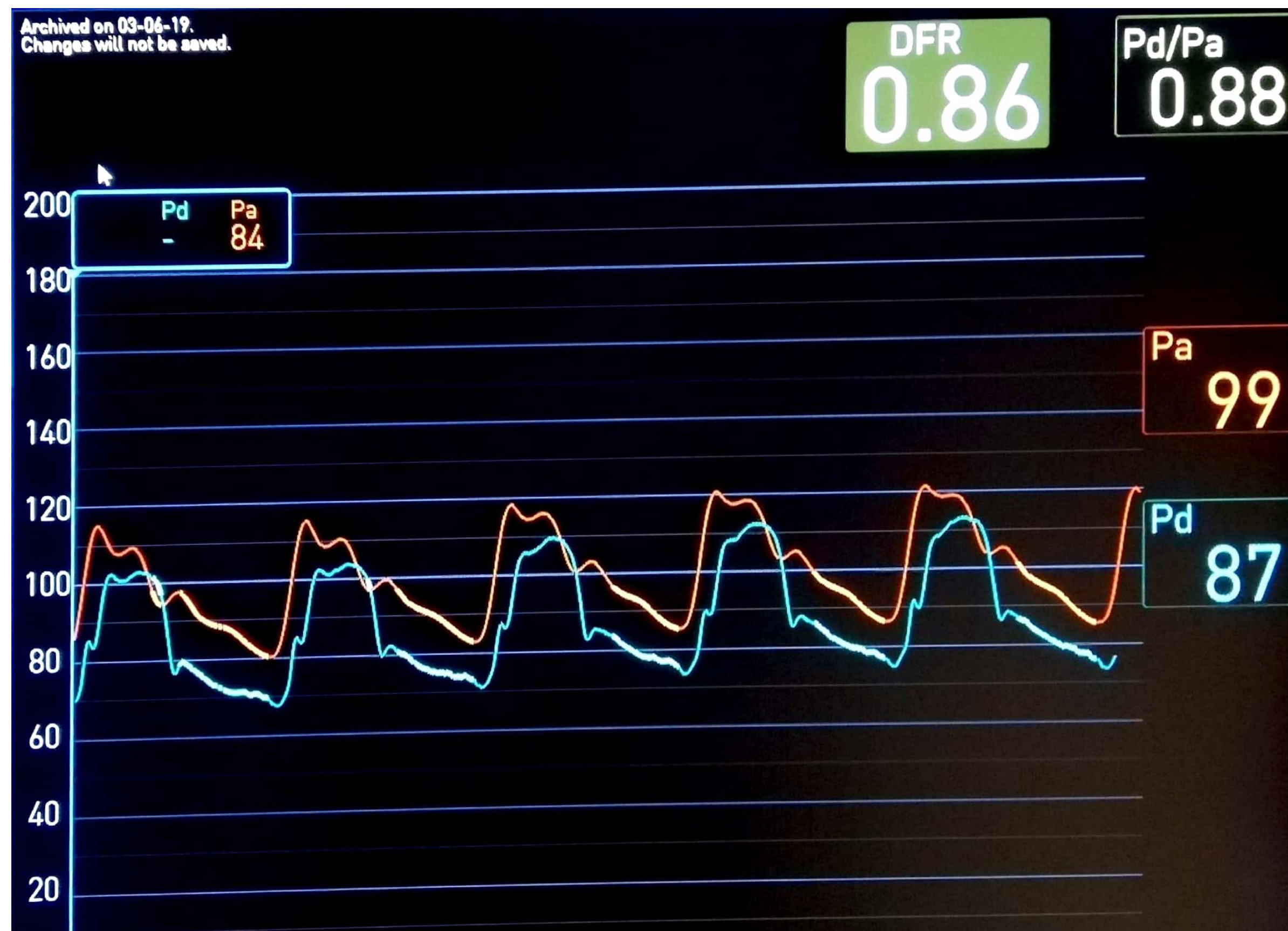
NON ST SEGMENT ELEVATION MYOCARDIAL INFARCTION



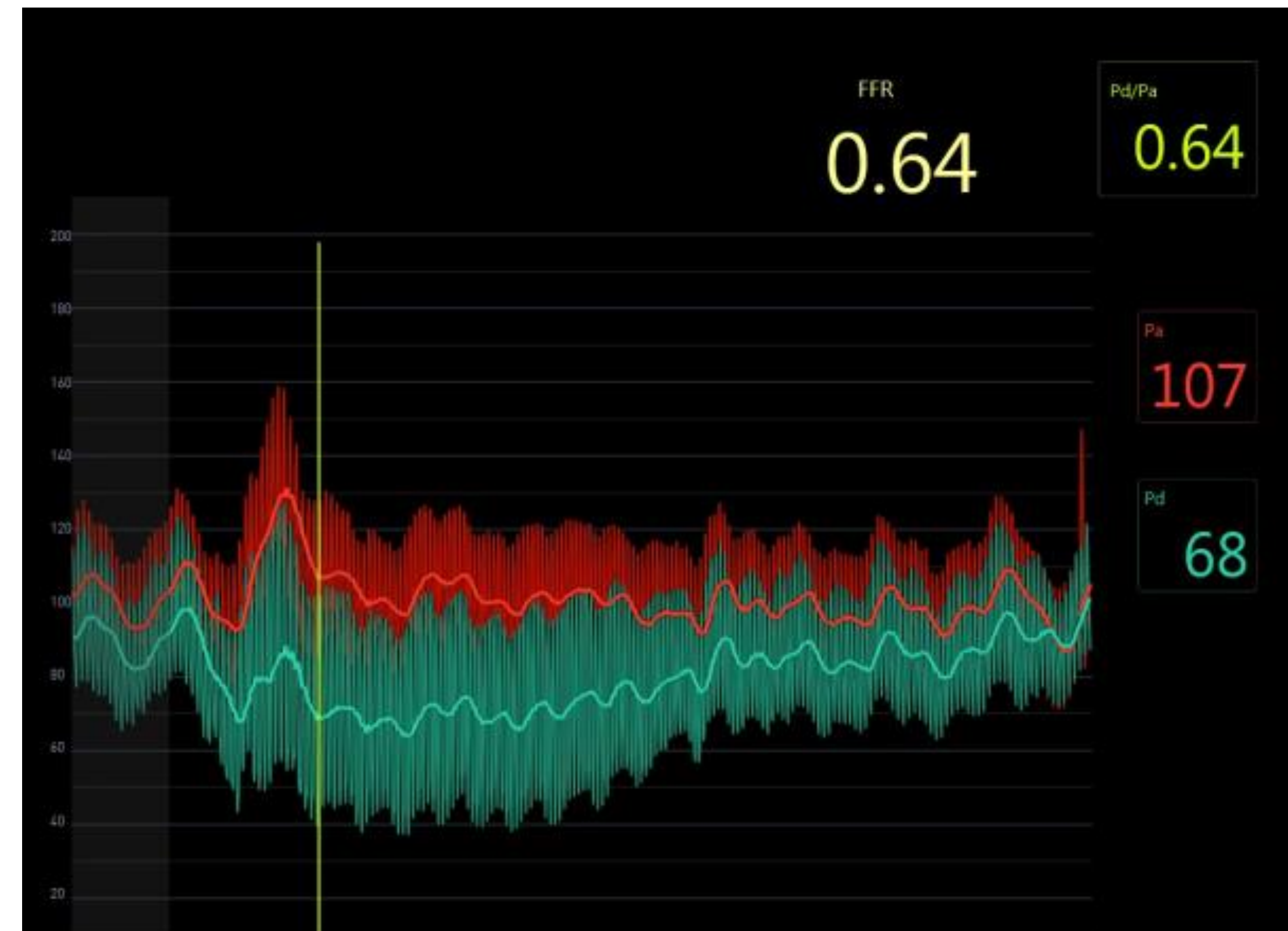
If the patient is randomized to «**COMPLETE REVASCULARIZATION FUNCTIONALLY-GUIDED**», the non culprit lesions should be interrogated with physiology! You can do it in the same index procedure (as in this case) or in a staged procedure Staged procedure should be before the hospital discharge

Valutazione funzionale online

DFR

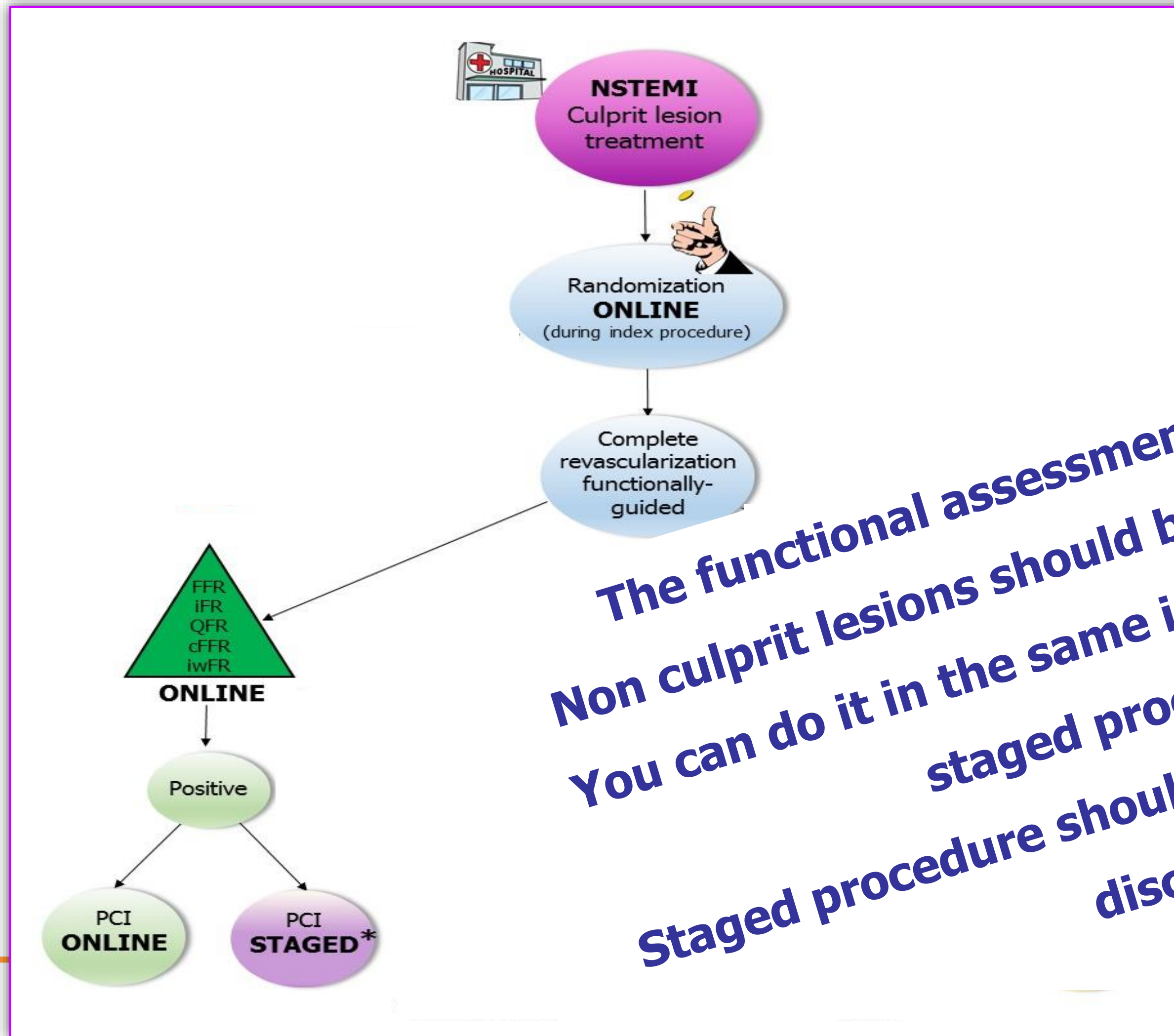


FFR



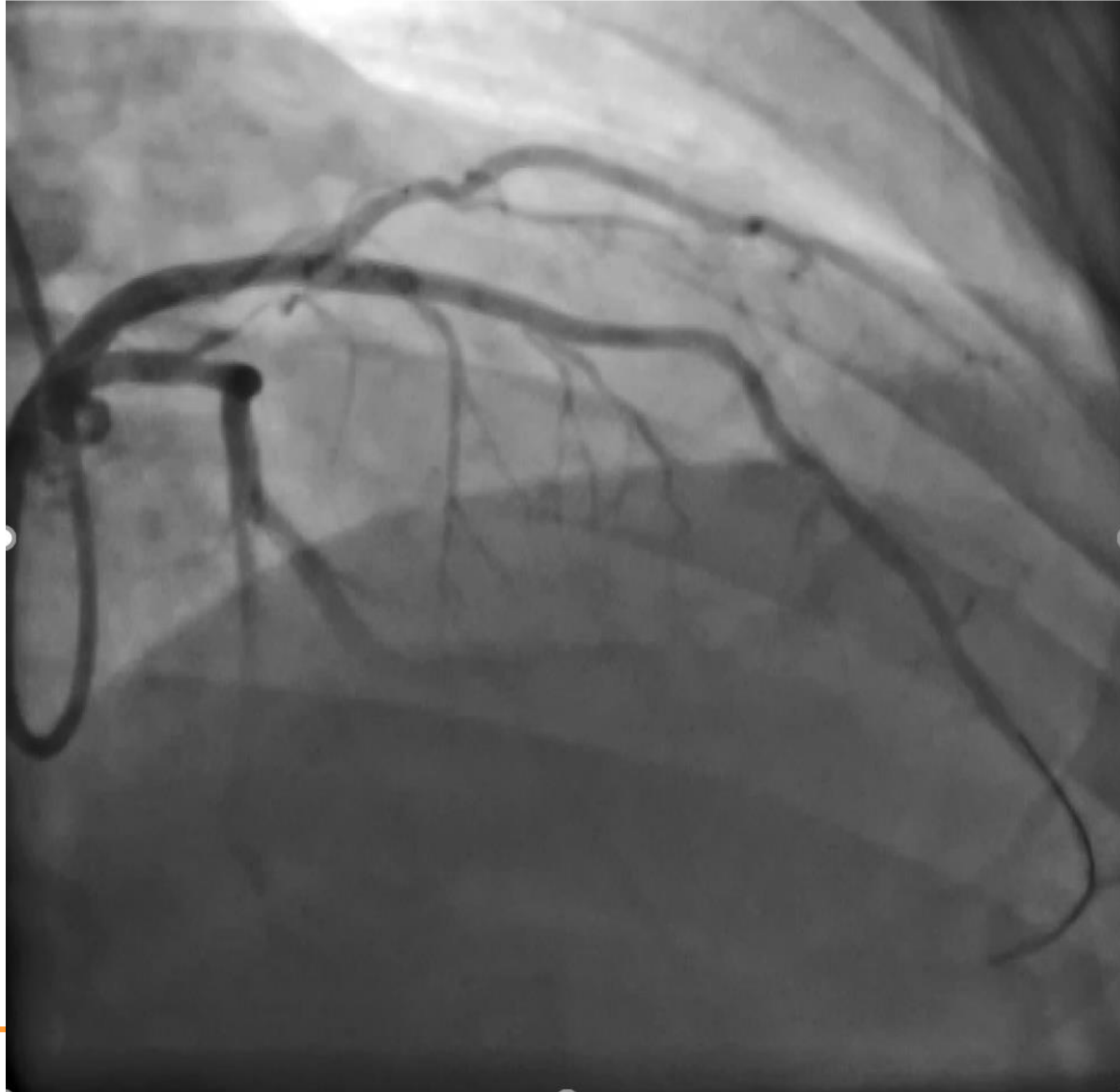
NSTEMI setting

NON ST SEGMENT ELEVATION MYOCARDIAL INFARCTION



The functional assessment was positive !!!
Non culprit lesions should be treated with PCI !!!
You can do it in the same index procedure or in a staged procedure !!!
Staged procedure should be before the hospital discharge

PCI online

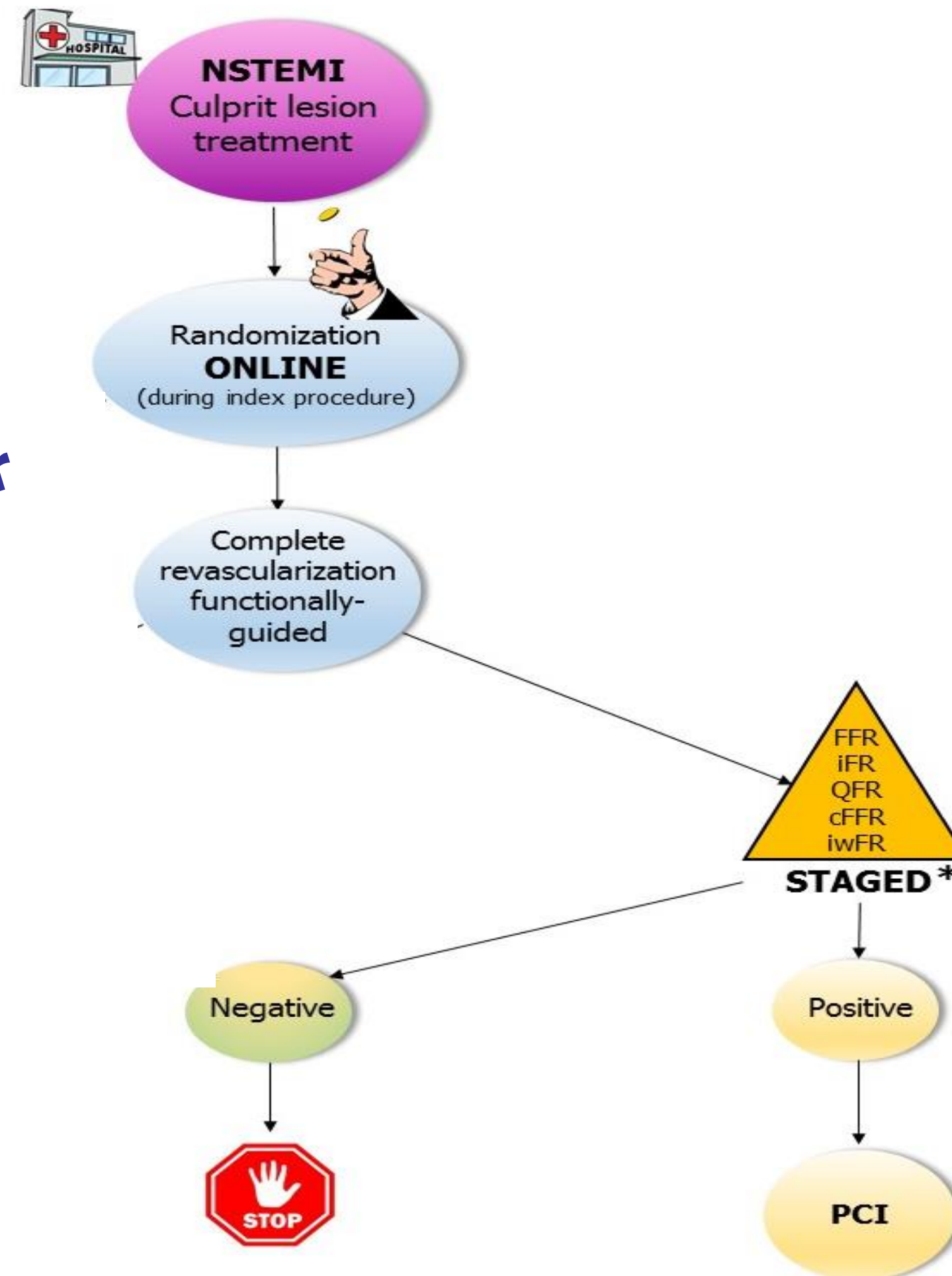


**Successful treatment of the non
culprit lesion with PCI and
implantation of Supraflex 3.5x36**

NSTEMI setting

NON ST SEGMENT ELEVATION MYOCARDIAL INFARCTION

If you prefer, you can perform the functional assessment also in a staged procedure (as for STEMI patients)



*STAGED: second procedure before discharge



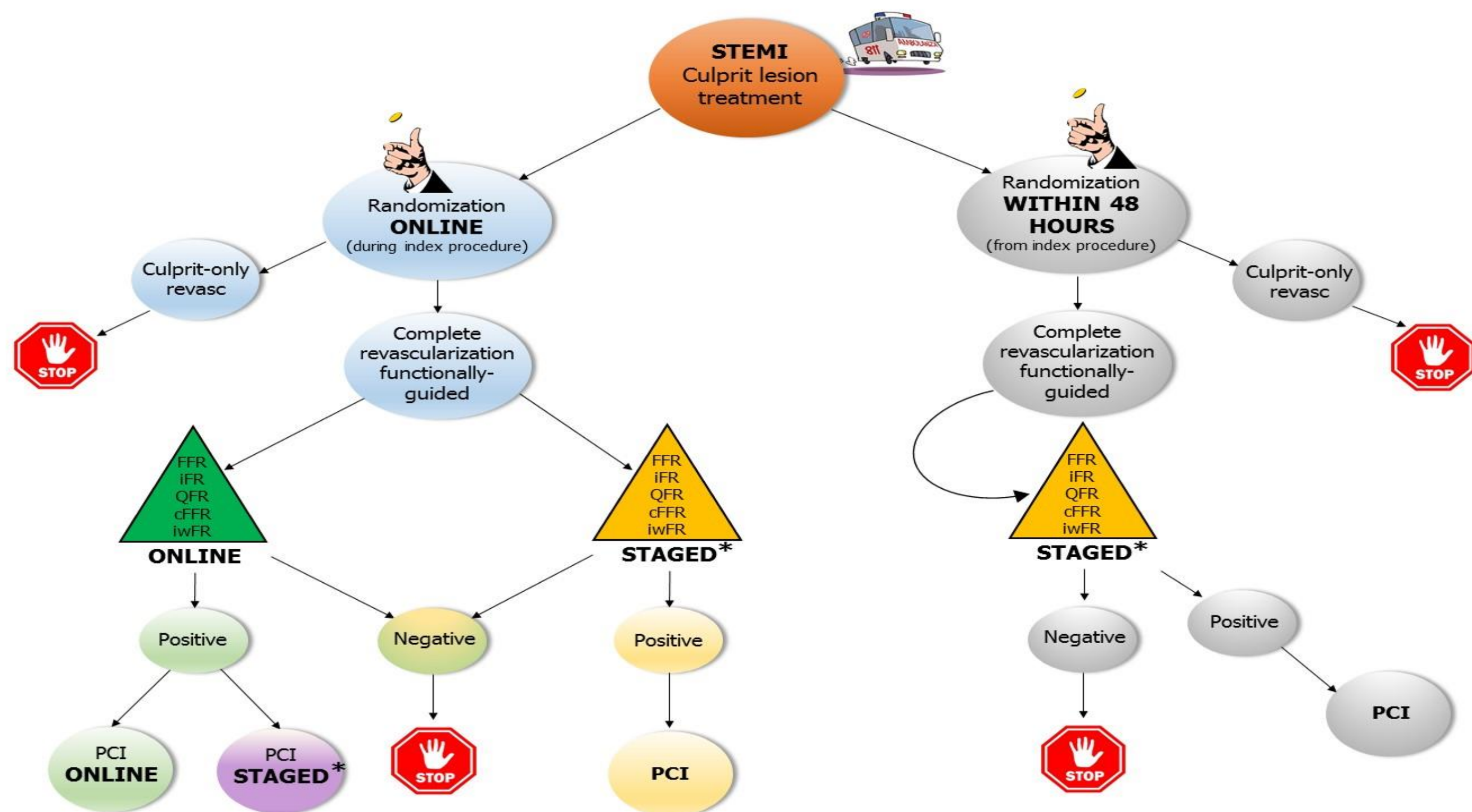
Functional versus Culprit-only Revascularization in Elderly Patients with Myocardial Infarction and Multivessel Disease

Study Contact Information:

Simone Biscaglia

email: bscsmn@unife.it phone: +390532236450

ST SEGMENT ELEVATION MYOCARDIAL INFARCTION



*STAGED: second procedure before discharge

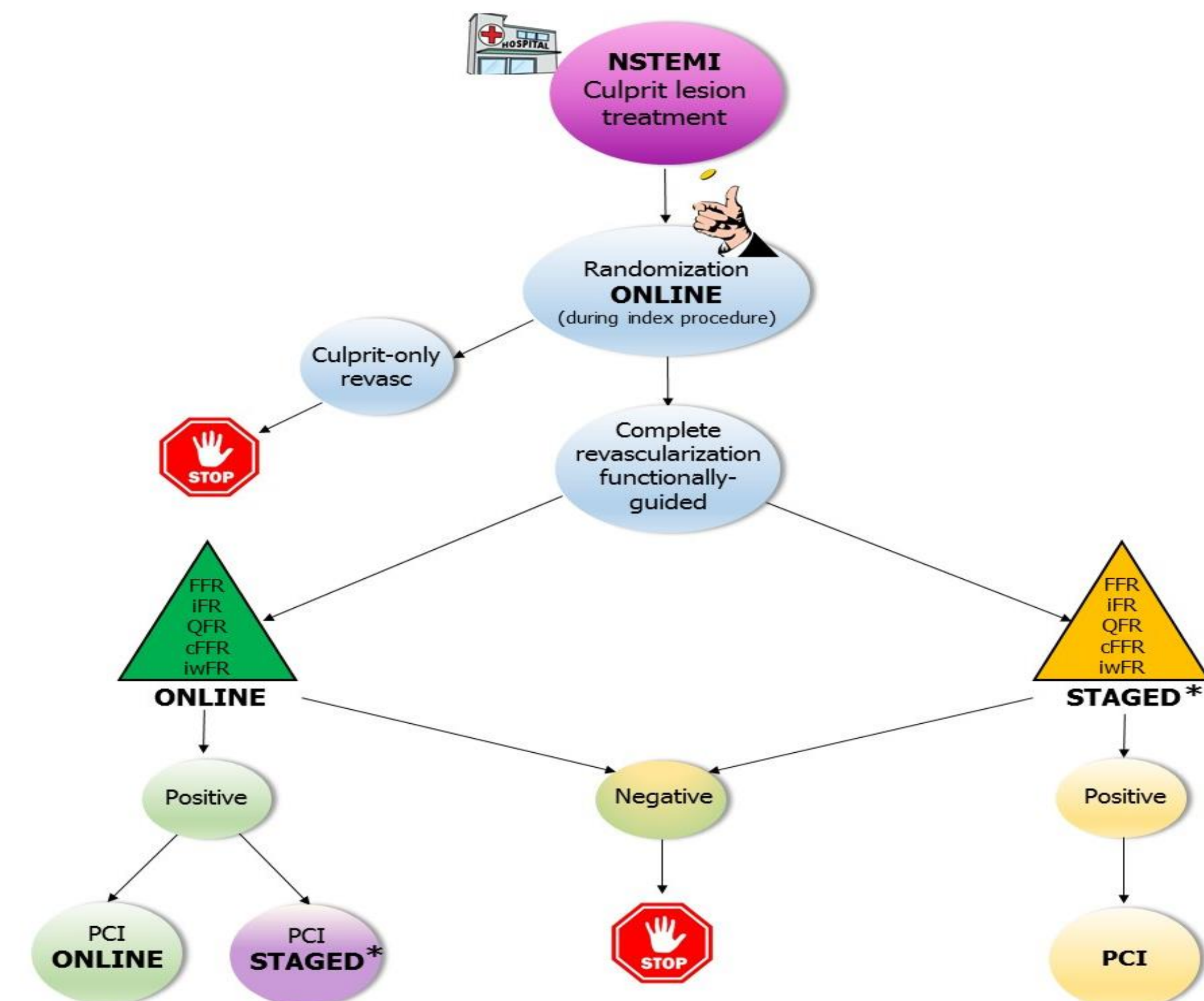
Inclusion criteria

- Patients ≥ 75 years
- MI (STE or NSTEMI) with indication to invasive management
- Multi-vessel disease defined as at least 1 non-culprit coronary artery lesion at least 2.5 mm in diameter deemed at visual estimation with a diameter stenosis % ranging from 50 to 99% amenable to successful treatment with PCI
- Successful treatment of culprit lesion

Exclusion criteria

- Planned surgical revascularization OR Left Main lesion as non-culprit
- Non-cardiovascular co-morbidity reducing life expectancy to < 1 year
- Any factor precluding 1-year follow-up
- Prior Coronary Artery Bypass Graft (CABG) Surgery
- Impossibility to identify a clear culprit lesion

NON ST SEGMENT ELEVATION MYOCARDIAL INFARCTION



*STAGED: second procedure before discharge